



The community impact of CSR rural on Fire Stations



Pete Smith

ACFO Devon and Somerset Fire and Rescue Service

3rd November 2010



Facts relating to reducing rural Fire Service Provision



A delay of one minute in attending all incidents across the Service Area would annually incur 3 additional deaths and £6.3 million additional community costs



75% of businesses do not recover from a serious fire



In the first half of 2009, British Insurers paid out £3.6 million a day for fire damage



The high impact of a marginal delay in attending a fire

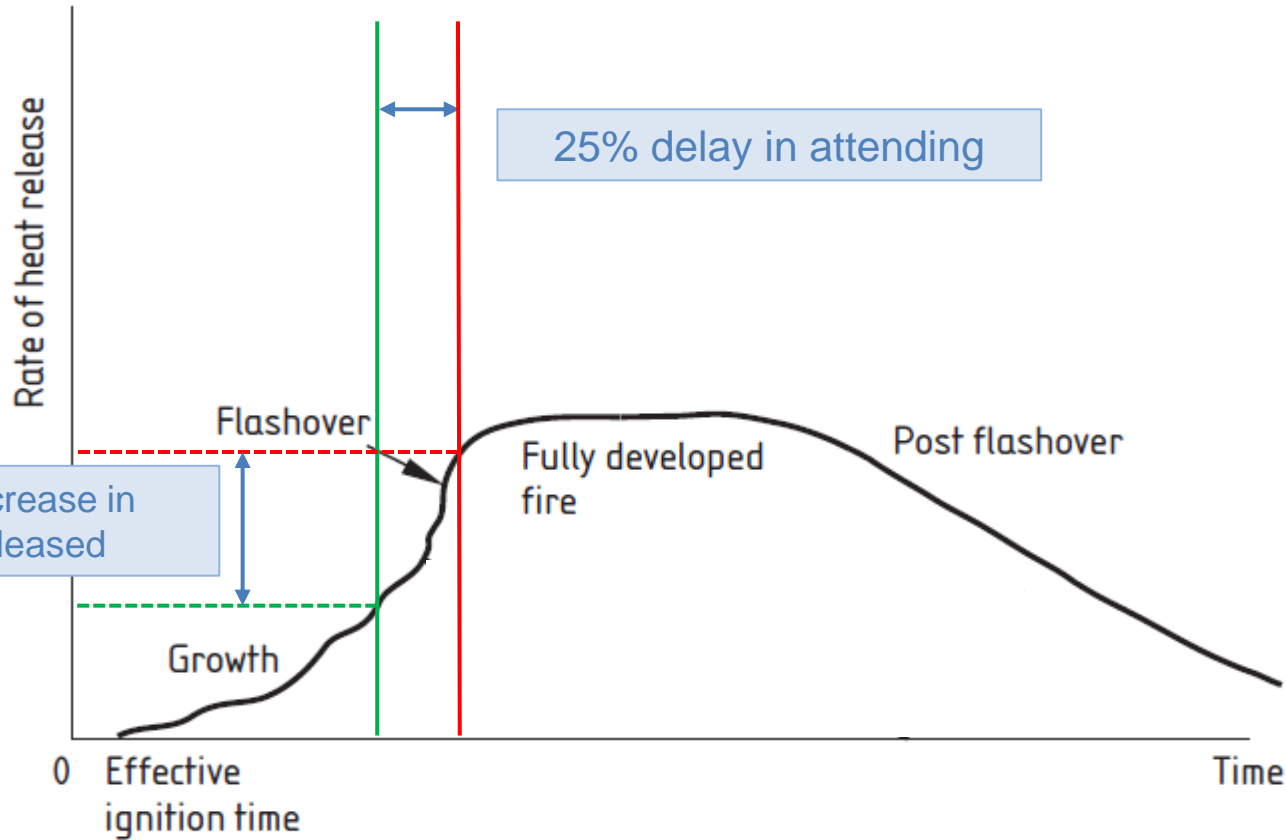
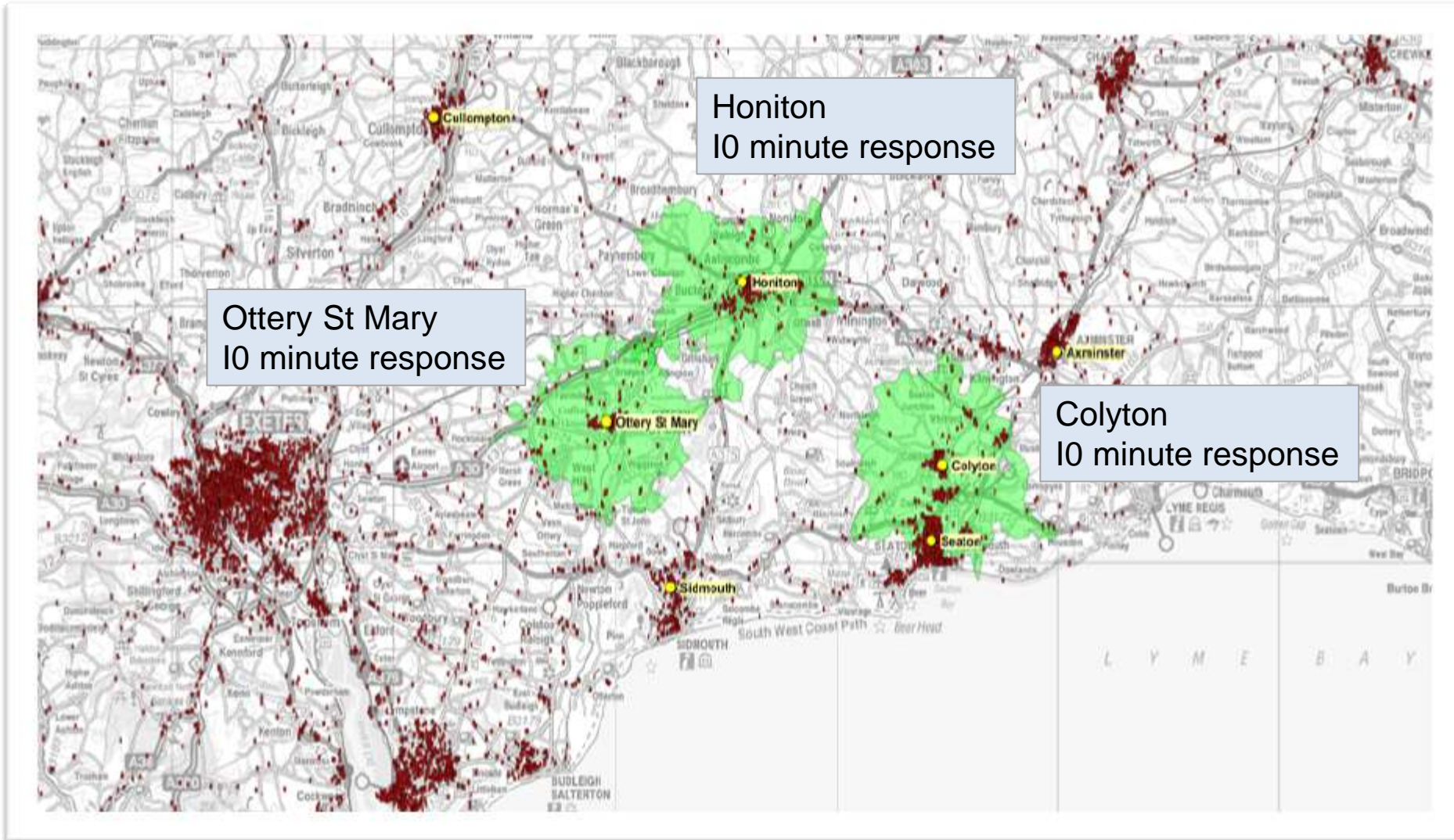


Figure 8 — Fire growth in an uncontrolled room fire

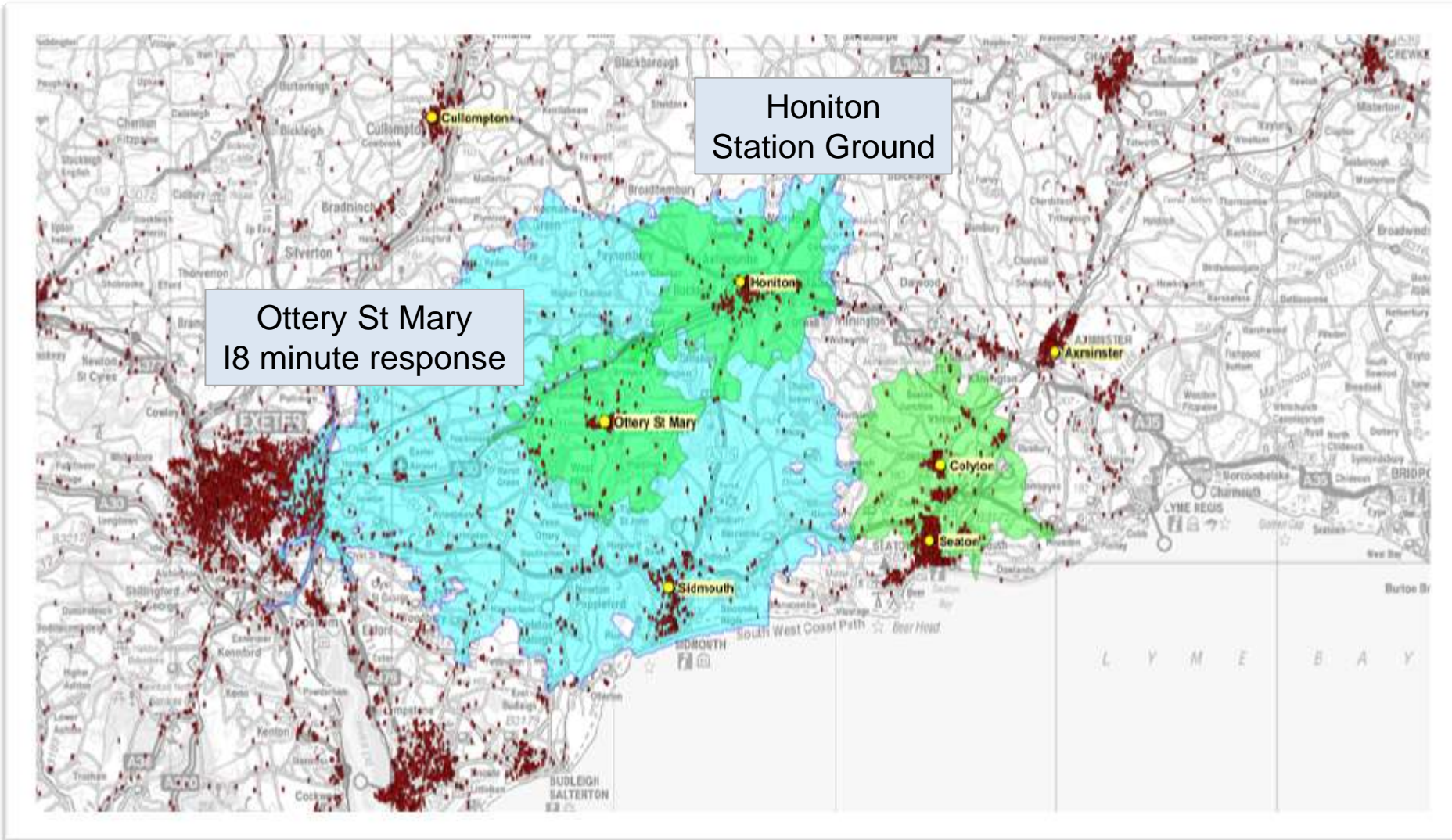


East Devon – Honiton, Ottery St Mary, Colyton 10 minute response areas and incident data (Apr 2007 – Mar 2010)



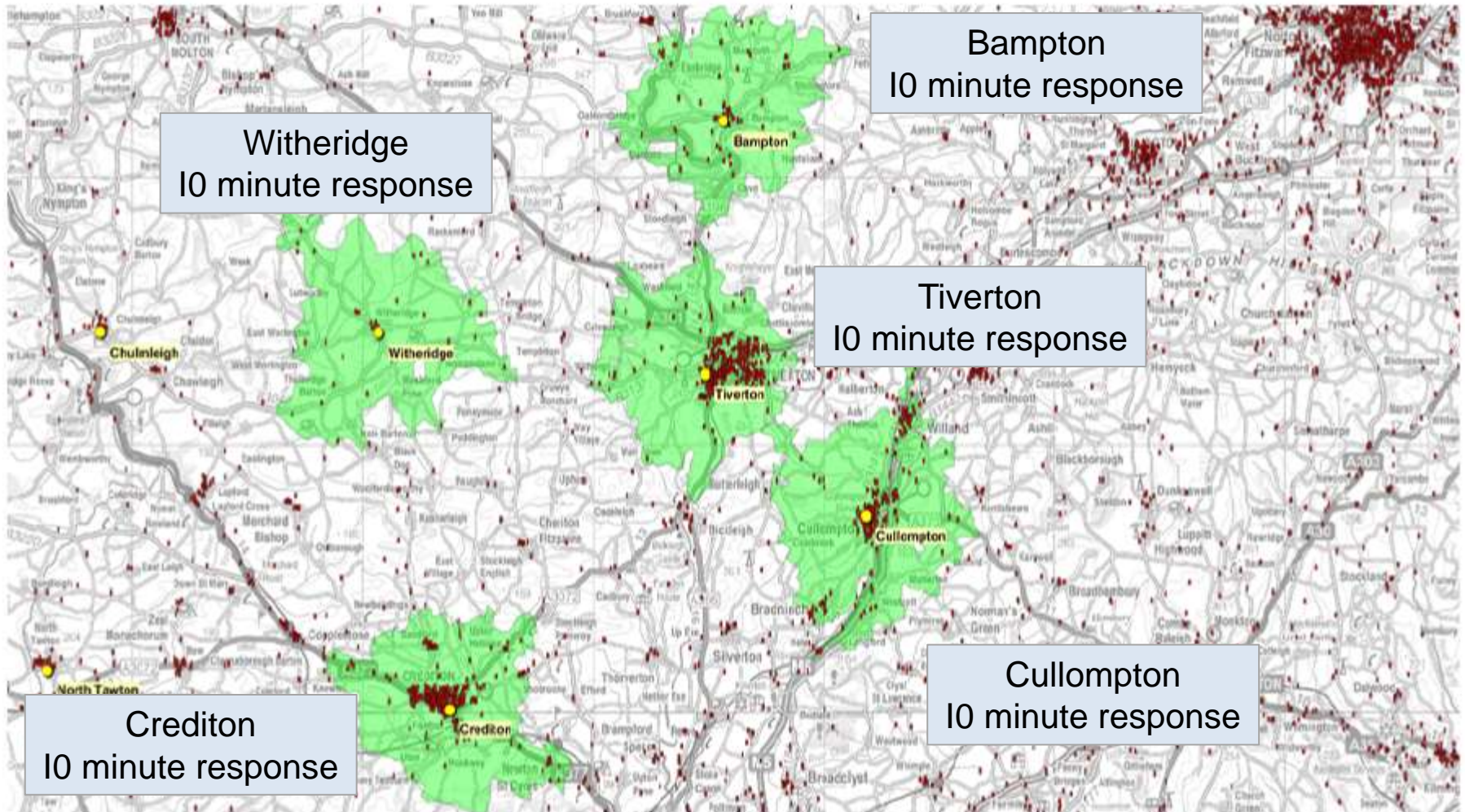


East Devon – closure of Honiton Ottery St Mary response to cover Honiton's station ground



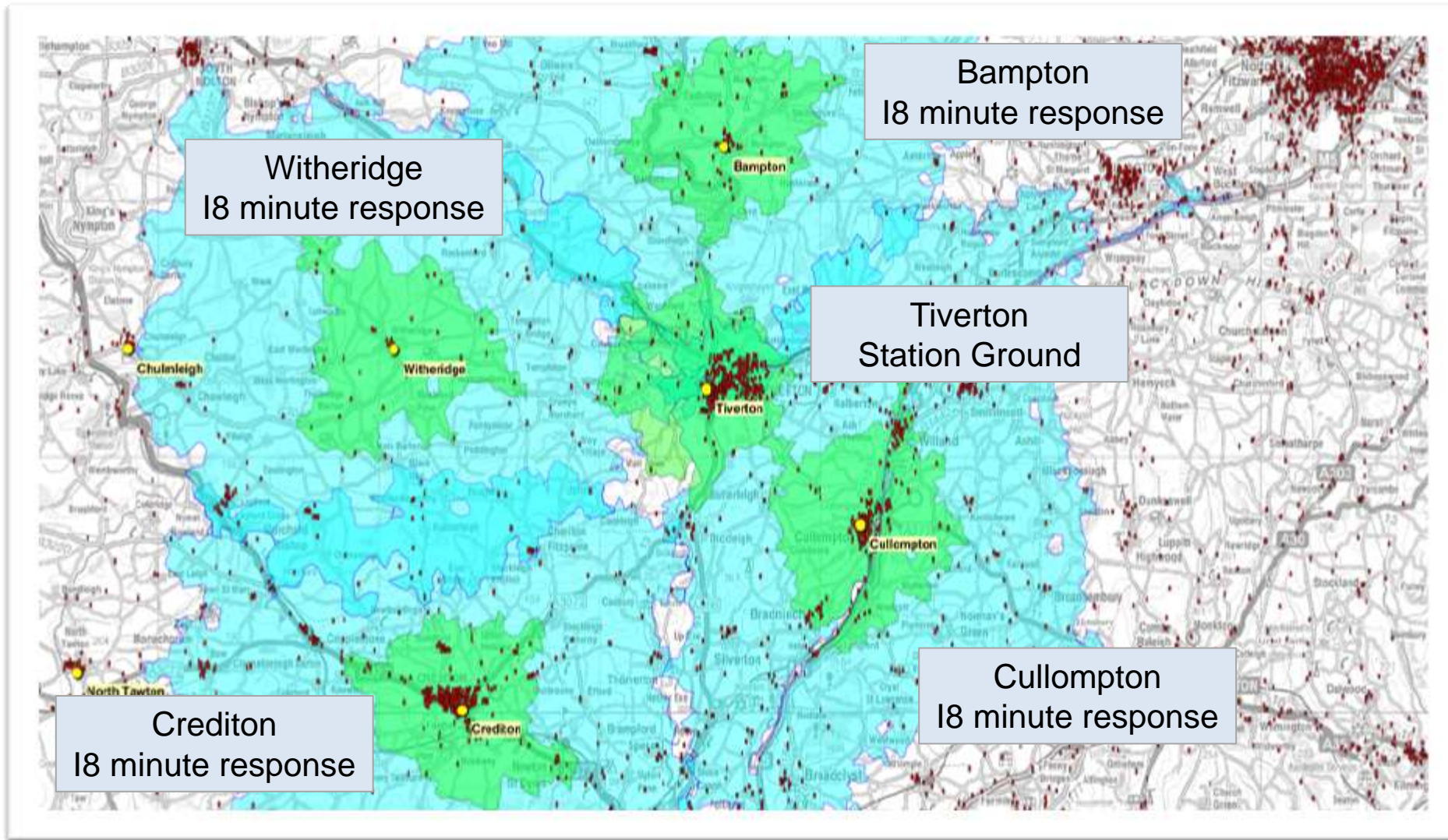


Mid Devon – Tiverton, Bampton, Cullompton, Crediton, Witheridge 10 minute response areas and incident data (Apr 2007 – Mar 2010)



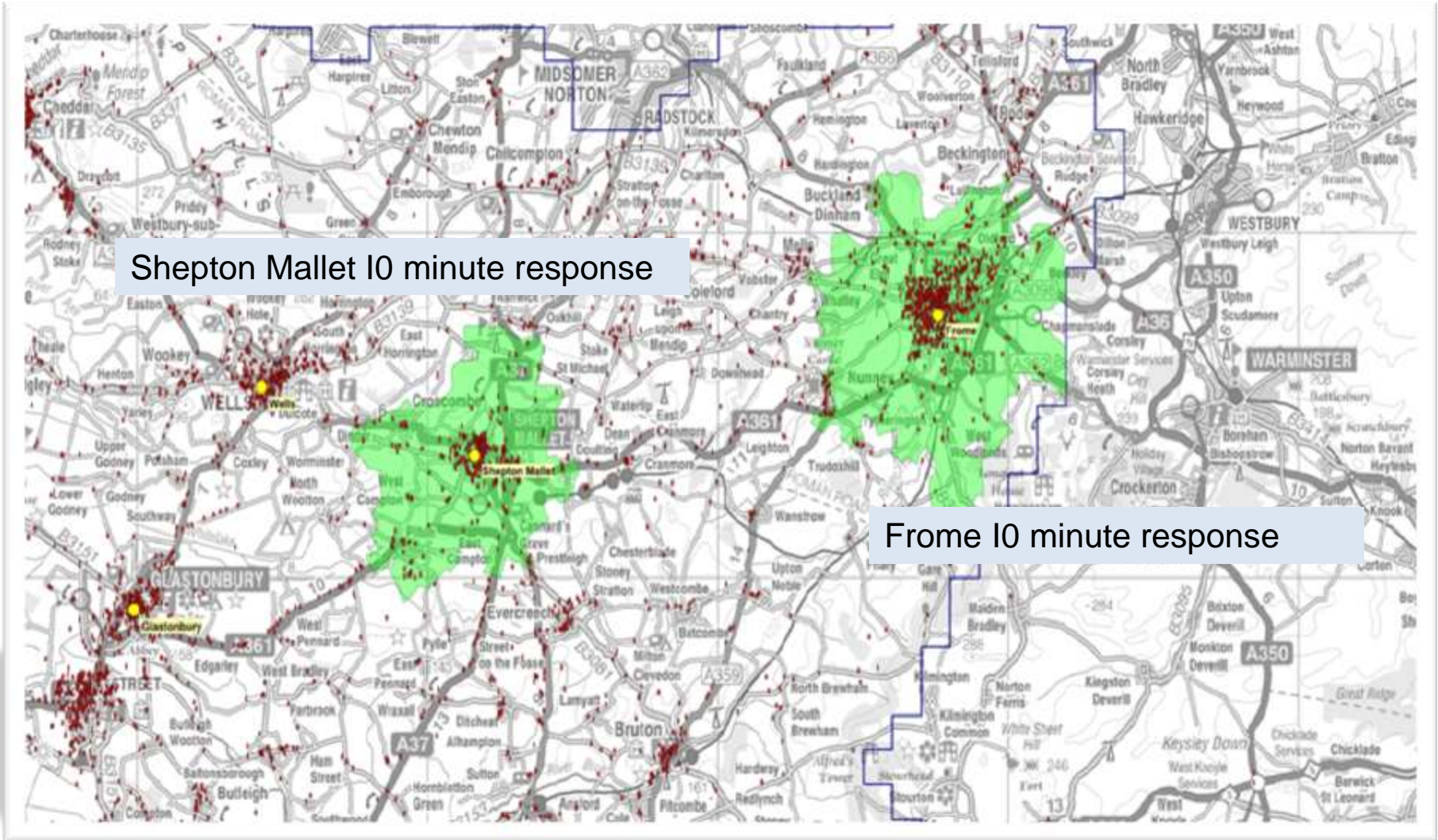


East Devon – Closure of Tiverton Adjacent stations 18 Minute response to cover Tiverton's Station Ground



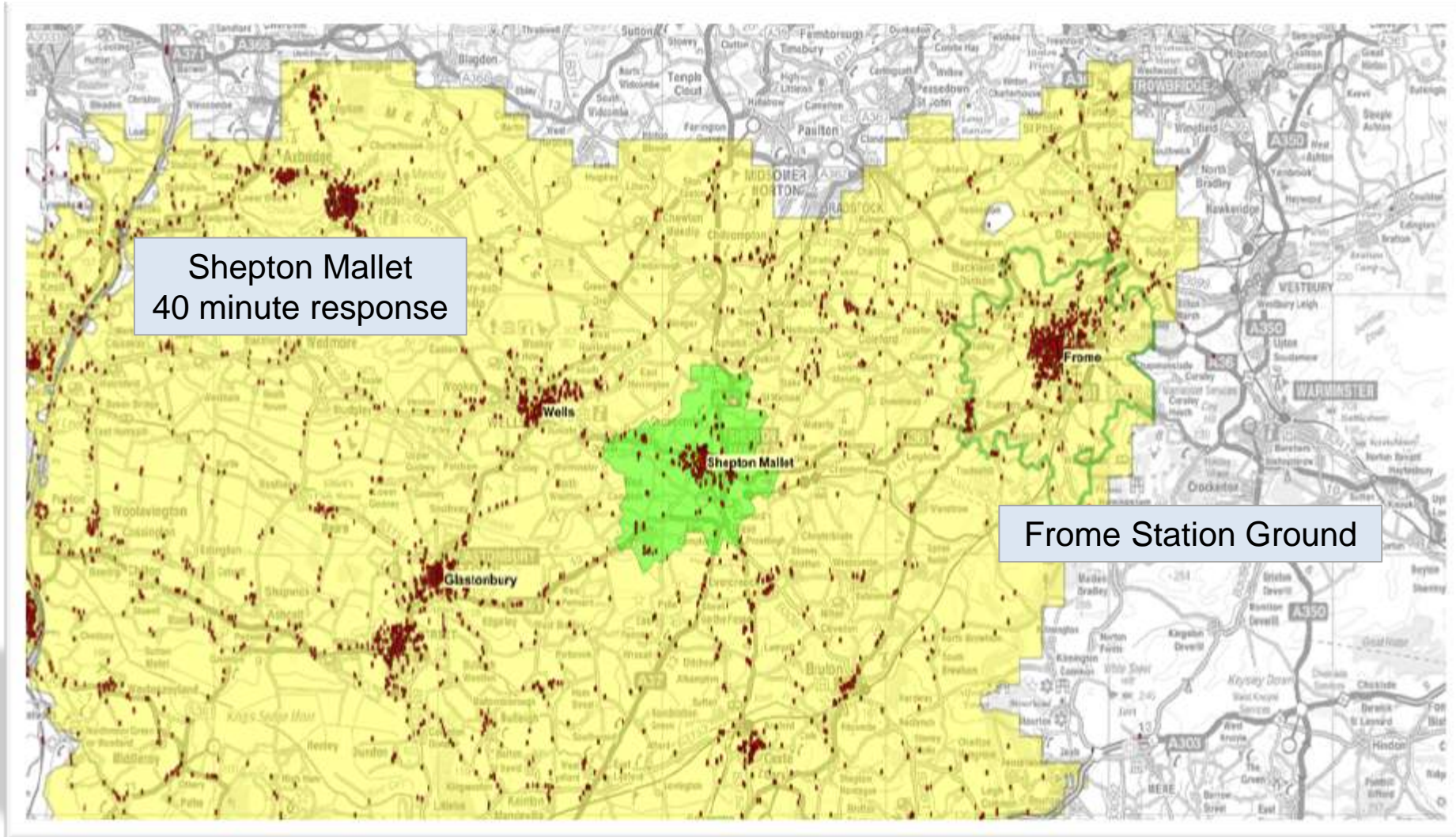


North Somerset – Frome and Shepton Mallet 10 minute response areas and incident data (Apr 2007 – Mar 2010)





North Somerset – closure of Frome Shepton Mallet response to cover Frome's station ground





Life and Cost impact of closing rural Fire Stations

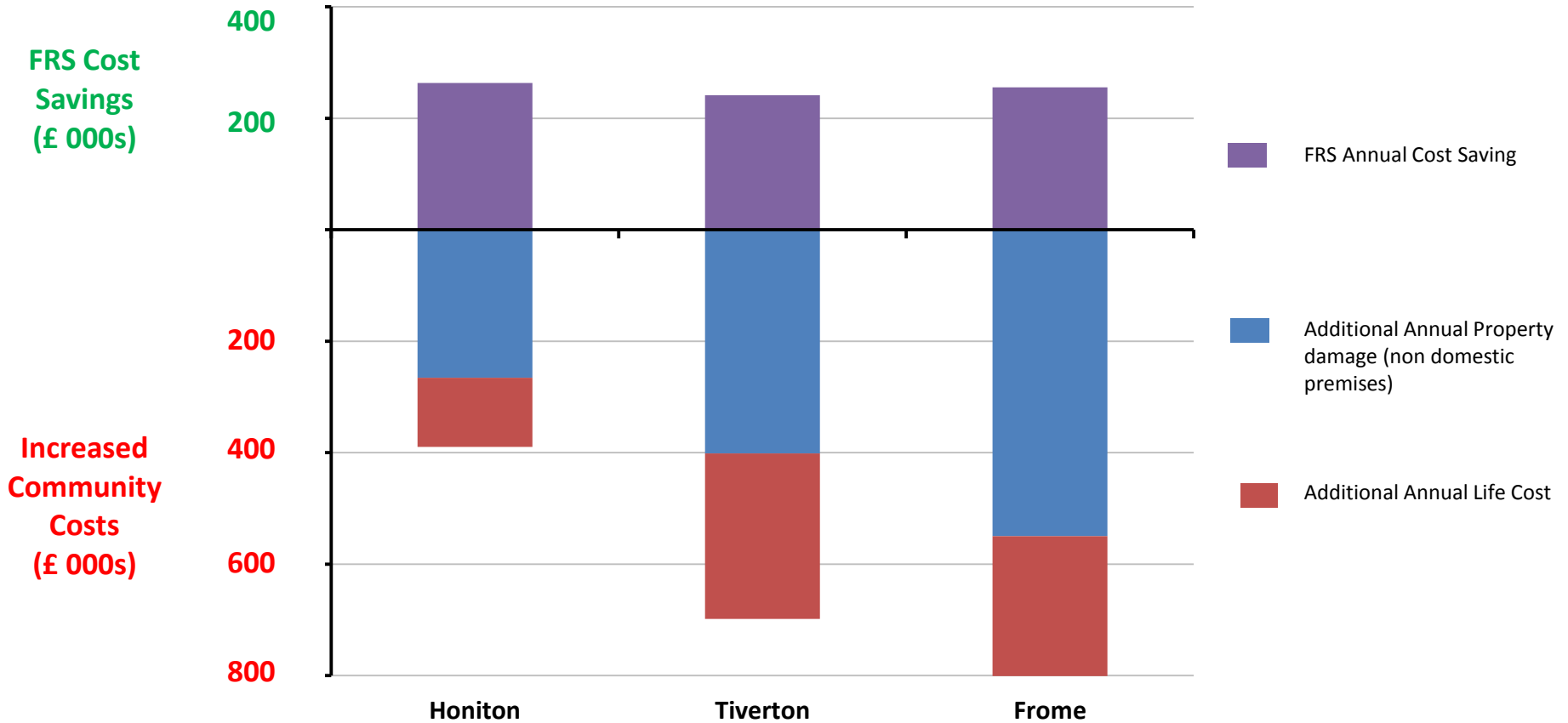
Station	Approximate additional time to reach from adjacent station	Additional Dwelling Fire death every	Additional Other Incidents (e.g. Road Traffic) death every	FRS Annual cost saving	Additional Annual Life Cost *	Additional Annual Property Damage Cost	Net annual Cost
Honiton	12 - 18 mins	18 years	10 years	£263,100	£265,648	£123,898	£126,447
Tiverton	15 - 18 mins	7 years	13 years	£241,100	£401,339	£297,131	£457,370
Frome	30 - 40 mins	8 years	5 years	£255,493	£550,037	£250,802	£545,346

* Life costs calculated using an estimate of **£1.59m** per life lost
 (source Office of the Deputy Prime Minister; Economic Cost of Fire Estimates 2004, adjusted for inflation)

Data Source; FSEC (Fire Service Emergency Cover) toolkit, DSFRS Community Risk Intelligence Team



Life and Cost impact of closing rural Fire Stations

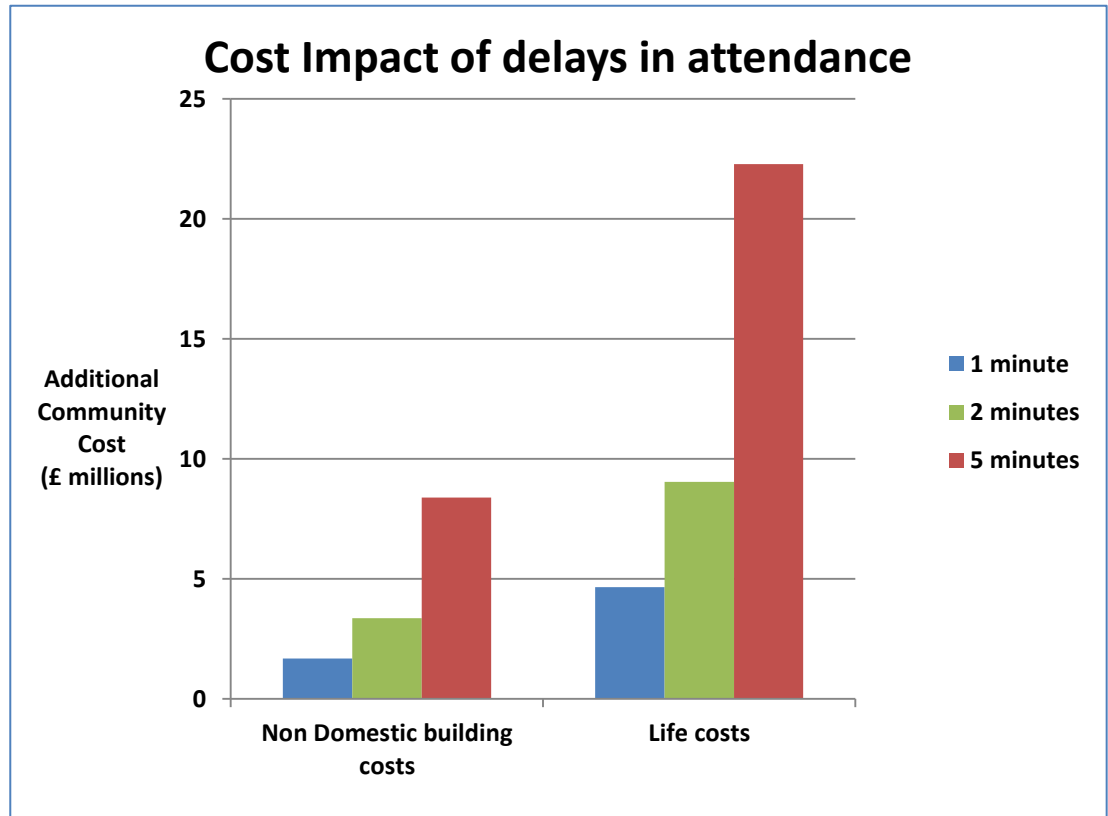
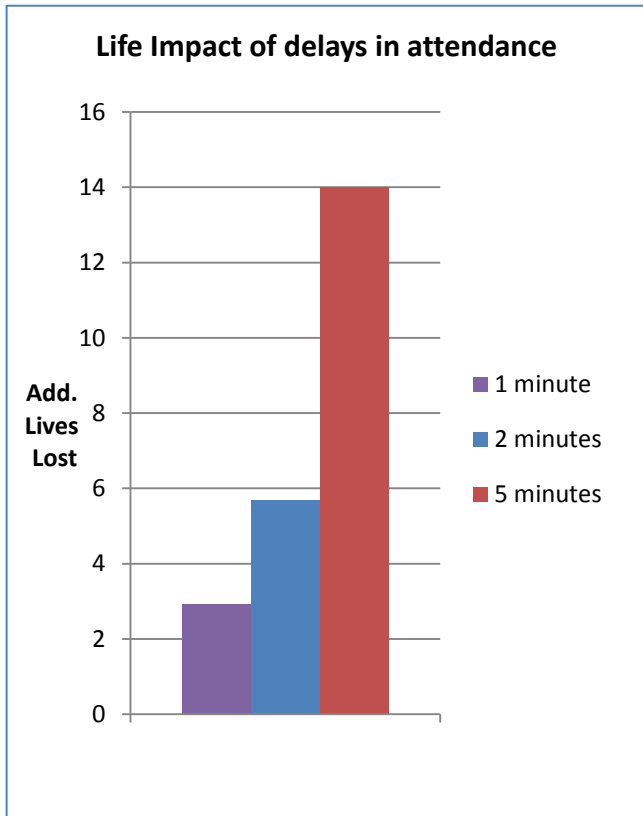


Data Source; FSEC (Fire Service Emergency Cover) toolkit, DSFRS Community Risk Intelligence Team

Life costs calculated using an estimate of £1.59m per life, source Office of the Deputy Prime Minister; Economic Cost of Fire Estimates 2004, adjusted for inflation



The high impact of delays in attendance to all incident types (whole Devon and Somerset area)



Data Source; FSEC (Fire Service Emergency Cover) toolkit, DSFRS Community Risk Intelligence Team

Life costs calculated using an estimate of £1.59m per life, source Office of the Deputy Prime Minister; Economic Cost of Fire Estimates 2004, adjusted for inflation