



a voice
for rural
communities



Rural Programmes

CVS Rural Infrastructure & Delivery Challenges

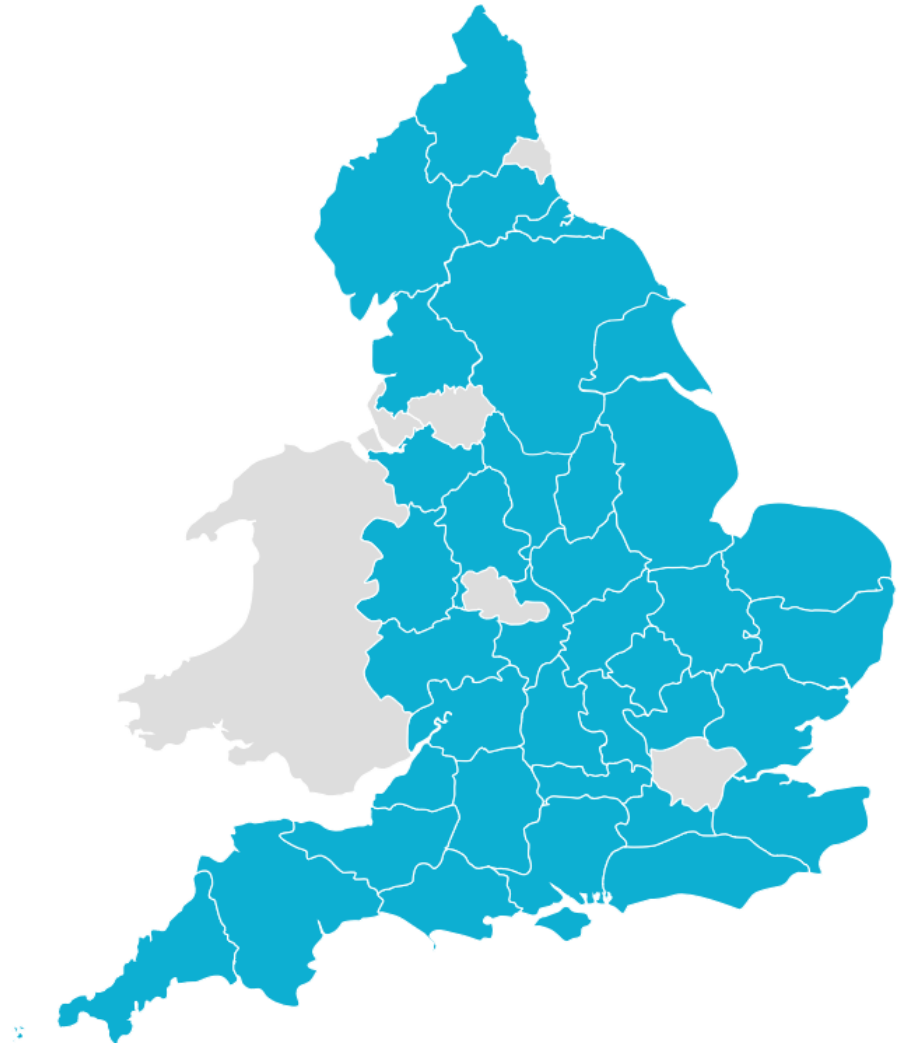
- Rural Community Councils (RCCs)
- Operating environment
- Key current challenges
- What we deliver



Rural Community Councils (RCCs)



- 38 RCCs
- ACRE
- Charitable local development agencies
- “Helping communities to help themselves”
- All very different



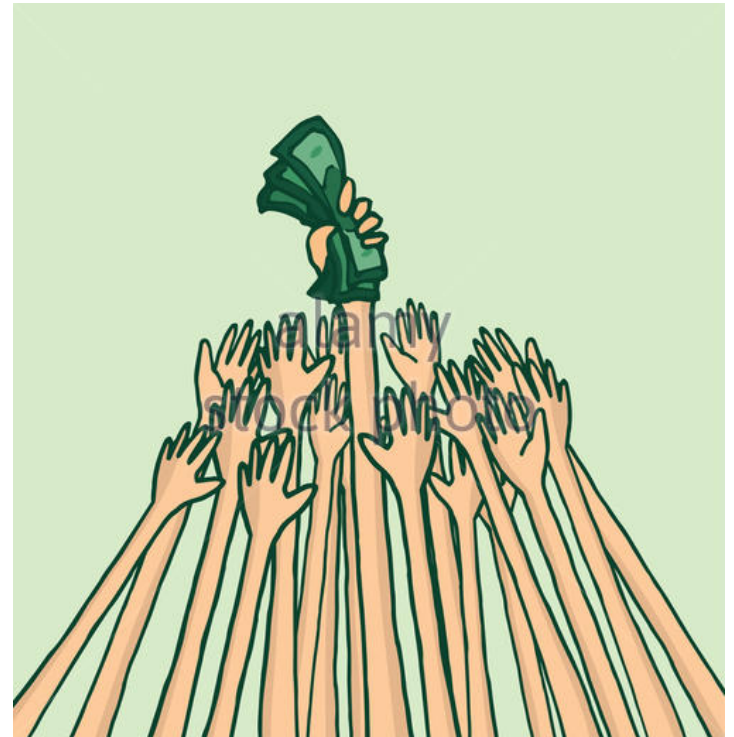
Community Action Northumberland



Our mission is to benefit and help sustain rural communities in Northumberland by:

- **Promoting Rural Issues ('Rural Voice')**
- **Empowering Organisations**
- **Supporting Individuals**

Operating environment







B-DAY

Operating environment

CAN's recent experience

- Infrastructure support
- End of lottery funds
- Defra funding
- Focus on strengths
- Diversification of income
- Reinvigorated Board

Year	Surplus / (Deficit)
2014/15	(£23,000)
2015/16	(£19,000)
2016/17	£3000

Challenges & Opportunities

- | | | |
|----------------------|---|---------------------|
| • Partnership | v | Competition |
| • Chase funding | v | Maintain objectives |
| • Core costs | v | Additional capacity |
| • Innovation | v | Tried & tested |
| • Development | v | Delivery |
| • Rural needs | v | Urban needs |
| • Efficient delivery | v | Huge geography |
| • Strategic planning | v | Opportunism |

What we do – some examples

- Infrastructure support
 - Village halls/community buildings
 - Parish/Town Councils
- Rural deprivation report
- Fuel poverty/energy efficiency
- Transport
- Economy & unemployment
- Housing
- Consultancy & community engagement

getabout
Helps you to get where you need to be!

Do you have difficulty in accessing essential services in Northumberland?
Getabout can help

Or would you like to make a difference in your community?
We're looking for volunteers to help deliver getabout.
We'd love to hear from you

Call **03333 441740** today!
You can find more information at www.adapt-tyne-dale.org.uk
or by emailing generaloffice@adapt-tyne-dale.org.uk

Skills & Opportunities Fund

Fuel Poverty/Energy Efficiency



- Warm Hubs
 - 20 venues
 - Newcastle rollout
- OilCAN & EnergyCAN
 - Durham partnership
- Energy Roadshows
- Smart Meters GB
- Winter fuel payments
- Community Energy Agents



Economic Development & Housing

- Rural Connect
 - 37 rural enterprise hubs
 - Ongoing support
- Community-led development network
- Community Housing Fund





Thank You

Email: andydean@ca-north.org.uk

Website: www.ca-north.org.uk