

RECYCLING ANALYSIS

The attached spreadsheet is our latest analysis of recycling statistics for local district authorities across England.

What's special about this analysis?

Rather than wait until year end to see how you are performing compared to other authorities, we're giving you an early indication of results to date. All information is taken from www.wastedataflow.org

There are two analyses provided:

- 1) Snapshot of Recycling Rate: This analysis shows the annual recycling rate for the year up to June 2013. The data shows a snapshot of how your authority is performing compared to other similar authorities. You can select your authority at the top, and the time period and view your performance compared to other authorities.
- 2) Recycling Trends: This analysis shows your authorities performance over time. The top and bottom of the graphs show the best and worst performing authorities. You can select your authority and one other to compare performance.

Who is doing well?

Despite the complexities involved in delivering refuse and recycling services in rural sparsely populated districts, 5 of the top 10 performers are classed as Predominantly Rural by Defra and one is Significantly Rural.

Residents in Oxfordshire are very good at recycling with three of the district authorities in Oxford in the top 10 performers!

- 2nd South Oxfordshire District Council (64.71%)
- 3rd Vale of White Horse District Council (64.21%)
- 7th West Oxfordshire District Council (59.29%)

(Figures are the for the year up to June 2013)

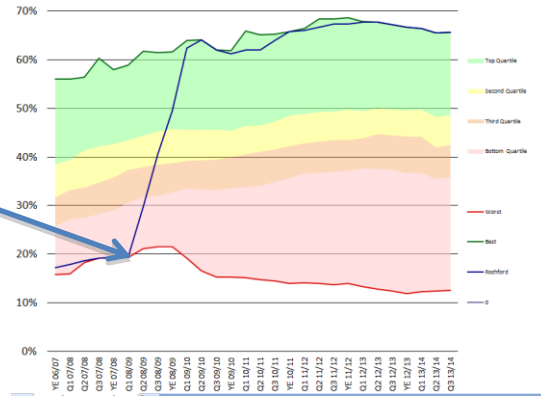
How are they doing so well?

The top performing district is Rochford, in Essex with a recycling rate of 66.40% for the year up to June 2013, overall recycling rates seem to have dropped slightly with the previous year's top performing authority reaching 67.83%.

Rochford set itself a target of 70% and has been working to modify their recycling scheme to maximise recycling. Until 2009, their recycling rate was below 20% and a new Maximise Recycling scheme was introduced in 2008. This scheme included an expansion of materials collected.

**Performance and Improvement Service
Provided by the
Rural Services Network - Sparse**

The graph shows the performance of Rochford and you can clearly see the point at which they introduced the Maximise Recycling Scheme.



Who is improving the most?

The top 3 most improved district councils for the period of the year up to June 2013 are:

	% Improved in the period June 2012 to June 2013
Aylesbury Vale	23.37%
Tandridge	12.88%
Forest of Dean	11.92%

Aylesbury Vale, a Predominantly Rural authority, is the most improved district, increasing their recycling by over 20% in the last year! They introduced a new collection scheme that has also significantly reduced the amount going to landfill. Their new scheme includes:

- An 'all in one' recycling bin which collects paper, glass, cardboard, plastics, cartons cans and tins
- A weekly food waste collection
- A paid for garden waste service
- Recycling is collected fortnightly on alternative weeks with the standard waste bin

Top 10 recycling rates		
	Authority	%
1	Rochford	66.40
2	S. Oxfordshire	64.71
3	Vale of White Horse	64.21
4	Surrey Heath	62.73
5	Three Rivers	61.93
6	Stratford-Upon-Avon	60.13
7	West Oxfordshire	59.29
8	Cotswold	58.61
9	Epping Forest	58.55
10	Woking	58.05

Biggest Annual Improvement to June 2013		
	Authority	%
1	Aylesbury Vale	23.37
2	Tandridge	12.88
3	Forest of Dean	11.92
4	Reigate and Banstead	11.66
5	Derbyshire Dales	9.72
6	Boston	9.68
7	E Northamptonshire	7.70
8	Maldon	6.60
9	West Somerset	6.56
10	Waverley	6.24

Biggest Quarterly Improvement to June 2013		
	Authority	%
1	Aylesbury Vale	7.53
2	Boston	5.06
3	Reigate and Banstead	3.92
4	Tandridge	3.72
5	Forest of Dean	3.65
6	Derbyshire Dales	3.52
7	East Northamptonshire	2.35
8	Amber Valley	2.01
9	King's Lynn and West Norfolk	1.89
10	Corby	1.83