

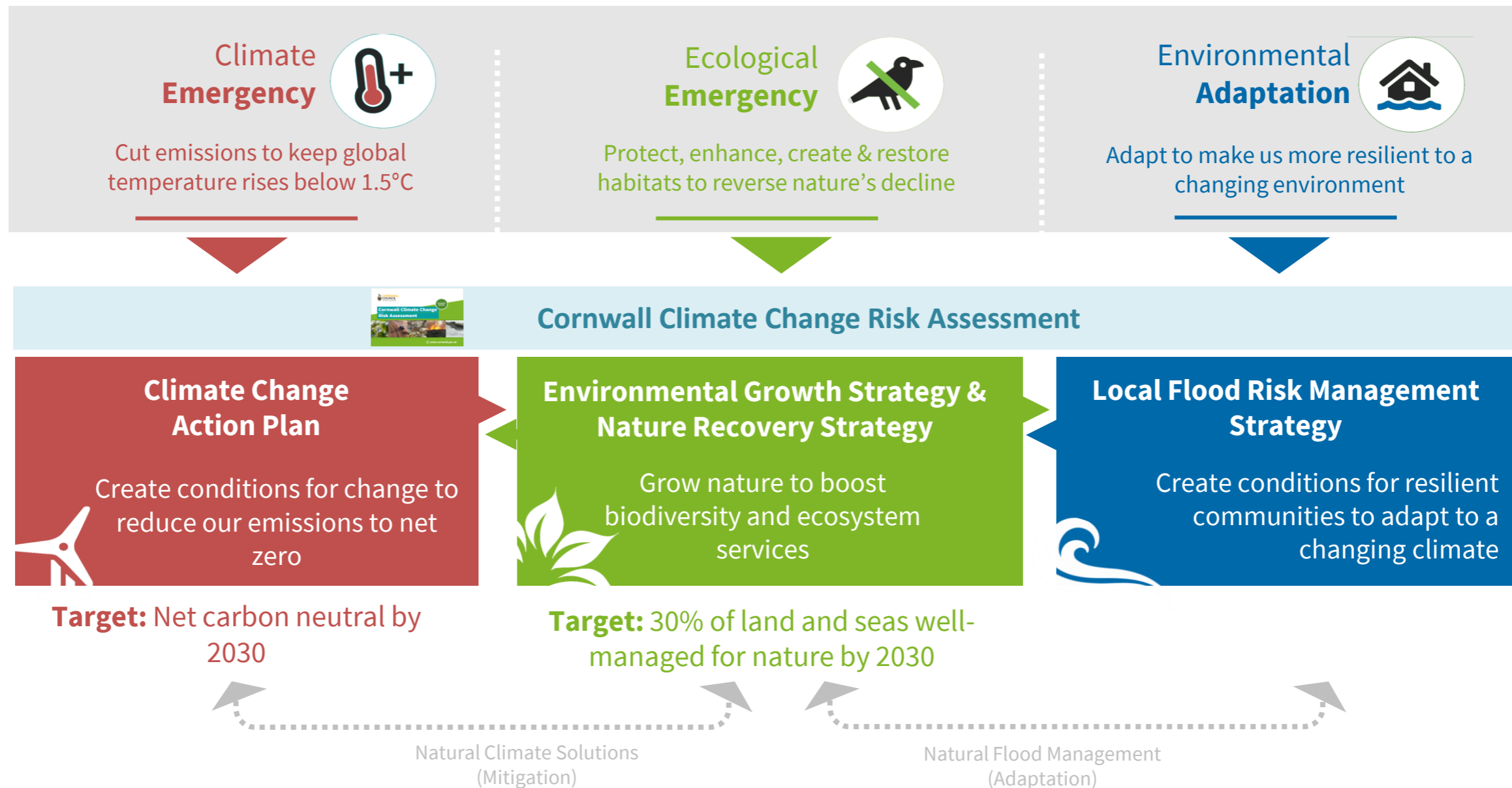
Carbon neutral Cornwall 2030

My world. Our planet.

 www.cornwall.gov.uk/climatechange



Three challenges



Cornish pilot scheme cuts bus fares to encourage use of public transport



Ticket prices reduced by between 20% and 40% in four-year initiative backed by £23.5m government grant



Levelling Up 'must help struggling coast communities'

Cost of living payment: Millions to get £301 to help pay bills

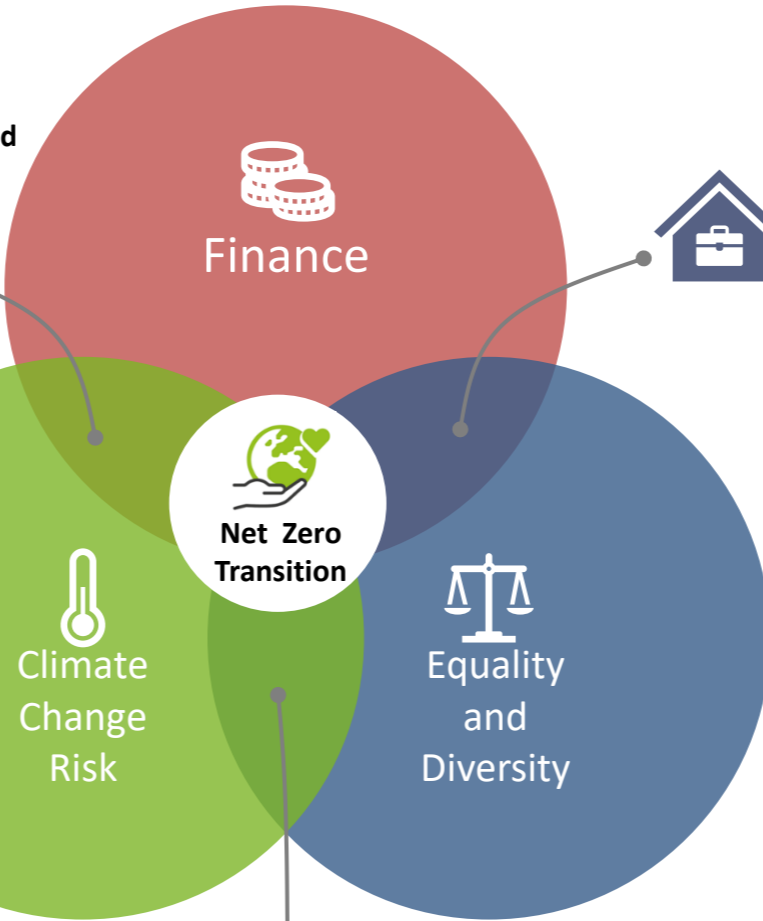


Cornwall Council: Cornwall's first smart-grid enabled wind turbine



Ventonteague Wind Turbine

Projects required to transition to net zero



People with the biggest financial risk



Residents asked to help house homeless

Cornwall · 24 Mar

First trees in 'Forest for Cornwall' planted

© 17 December 2019



Cornwall faces hosepipe ban amid drought and heatwave

South West Water said the ban would come into force from August 23 to protect dwindling supplies.



5:56 pm · 15 Aug 2022 · Twitter for Android

Adapt or die, says Environment Agency

With less than three weeks to COP26, Environment Agency warns that adaptation – becoming resilient to the effects of climate change – is just as vital as mitigation



People with the greatest health and wellbeing risk

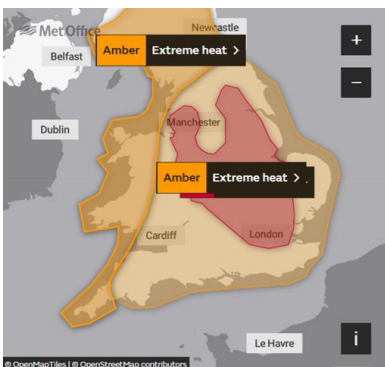
Truro hit by torrential downpours and flooding as Amber thunderstorm warning issued - live updates



Cornwall's Pirate FM @piratefm

Heavy downpours across the north coast this morning has resulted in flash floods affecting St Merryn, Watergate Bay and Newquay. For the latest #cornwalltravel follow @piratefmtravel #localradio #cornwall #keepitpirate #30yearservingcornwall

11:32 am · 16 Aug 2022 · TweetDeck



Our role in a carbon neutral Cornwall

Working across boundaries and with government to become the first net neutral region in the UK

Facilitating local system leadership to influence the action of our partners and suppliers

Leading by example to become a carbon neutral council

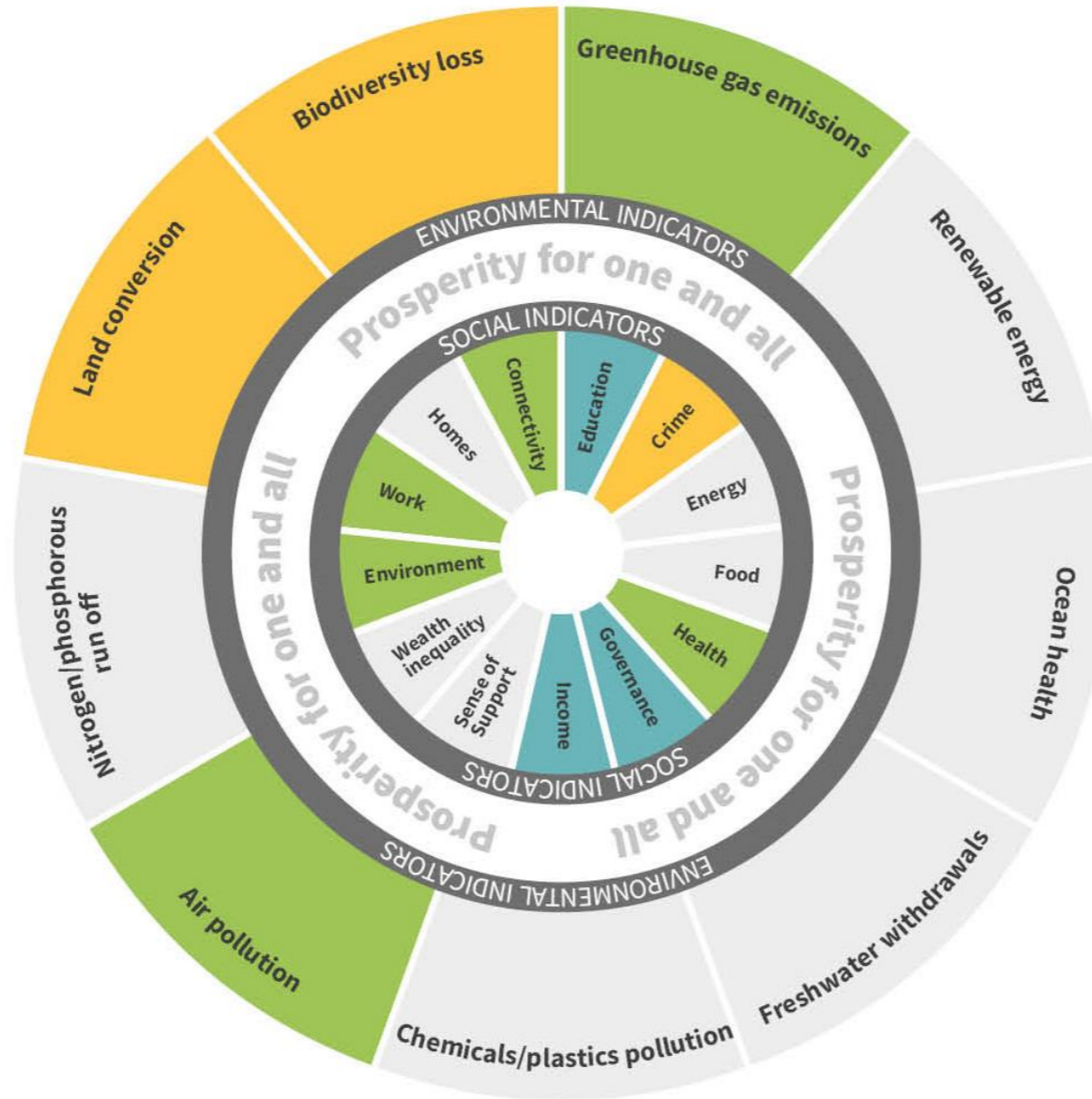


A map of Cornwall, UK, is shown with a color-coded legend. The map is divided into three regions: a large light green region representing emissions under influence (40% estimate), a medium purple region representing emissions under influence (40% estimate), and a small dark blue region representing direct emissions (1% Cornwall emissions). The map is overlaid with a grid of dashed white lines.

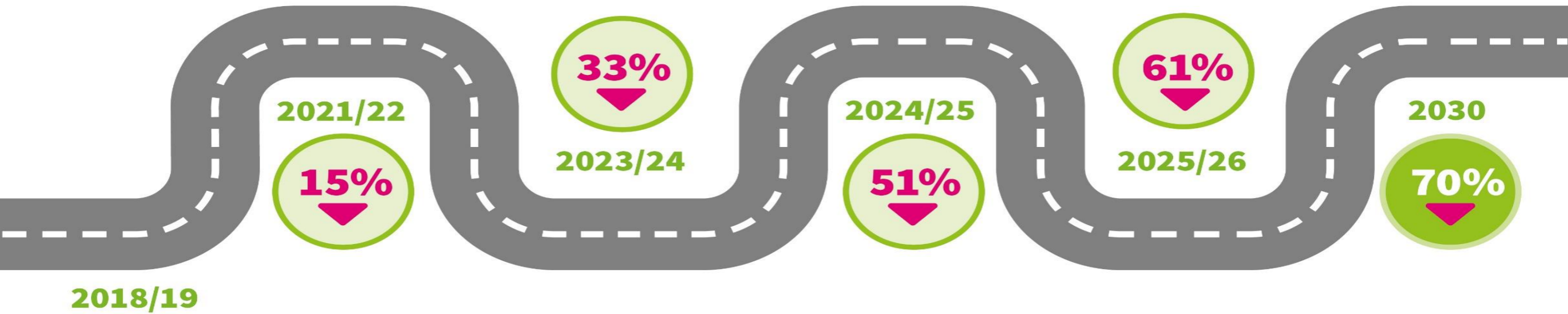
■ = Emissions under our influence
(40% estimate)

■ = Our direct emissions
(1% Cornwall emissions)

Placing people and planet at the centre of our decision making



Road map to a carbon neutral council



Decentralise

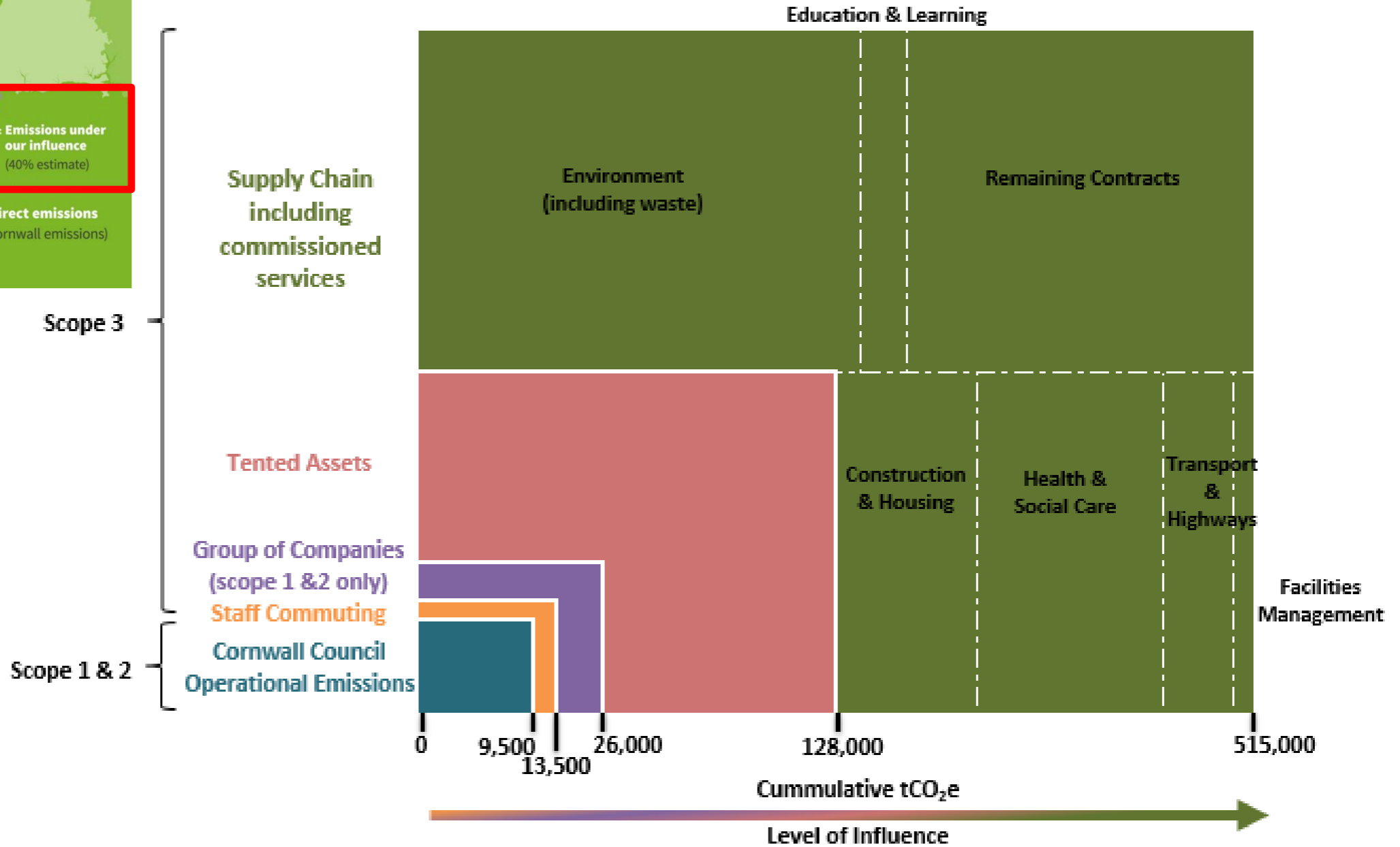
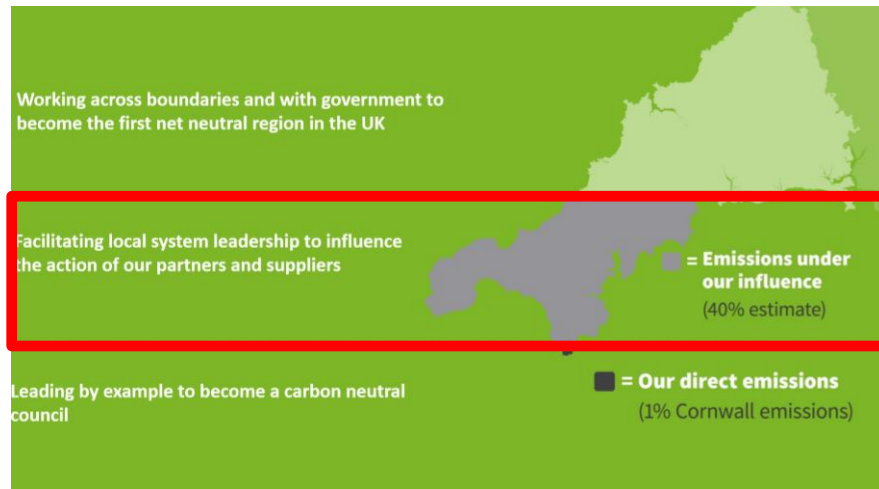


Digitise

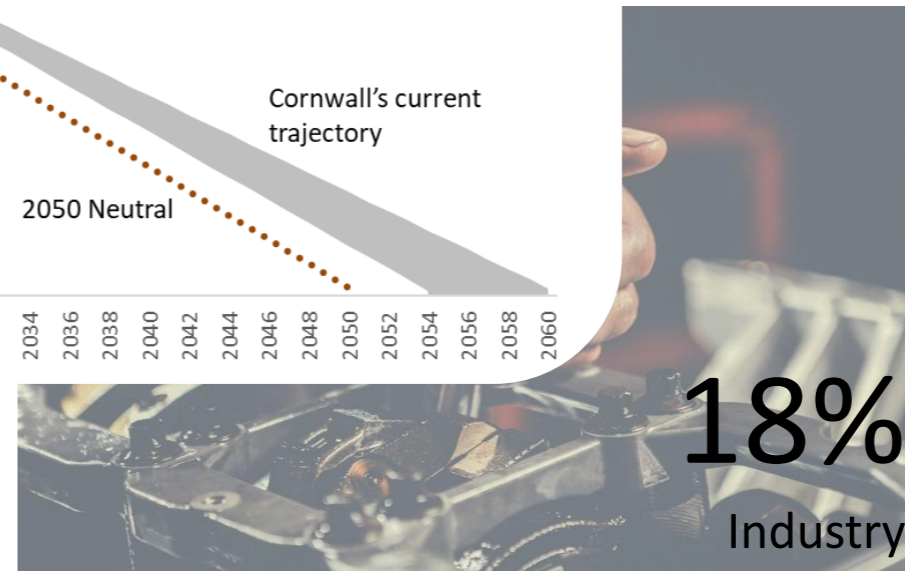
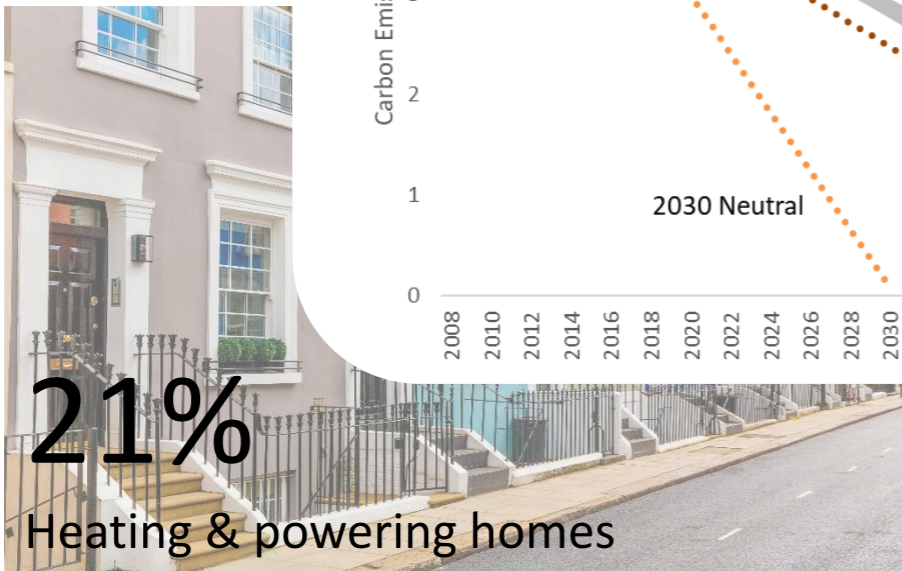
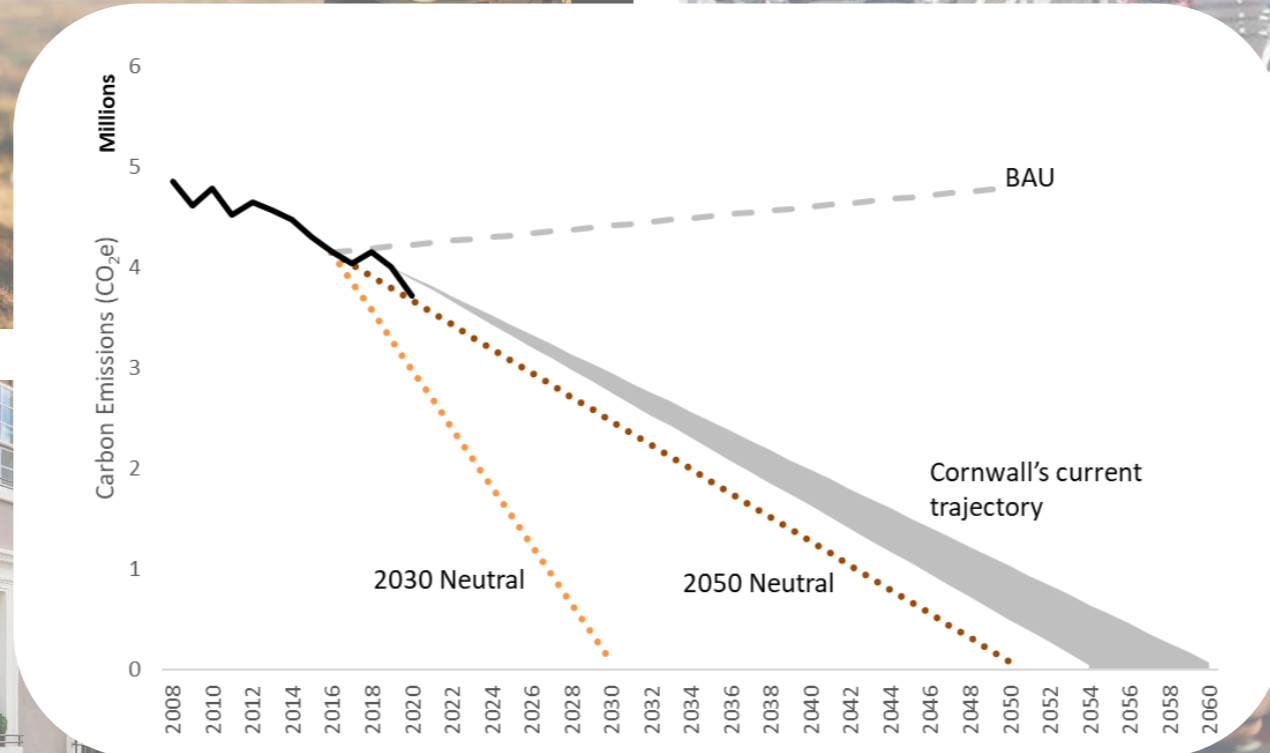
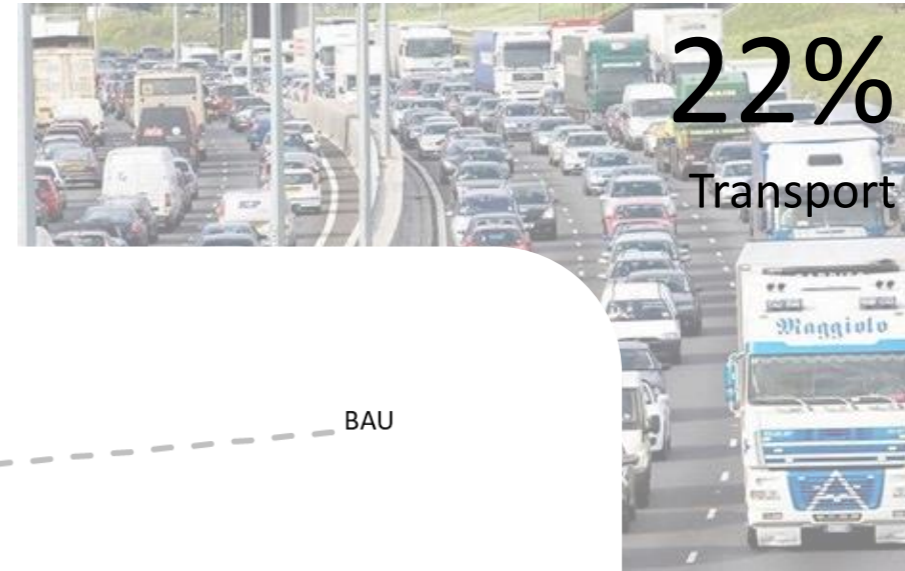
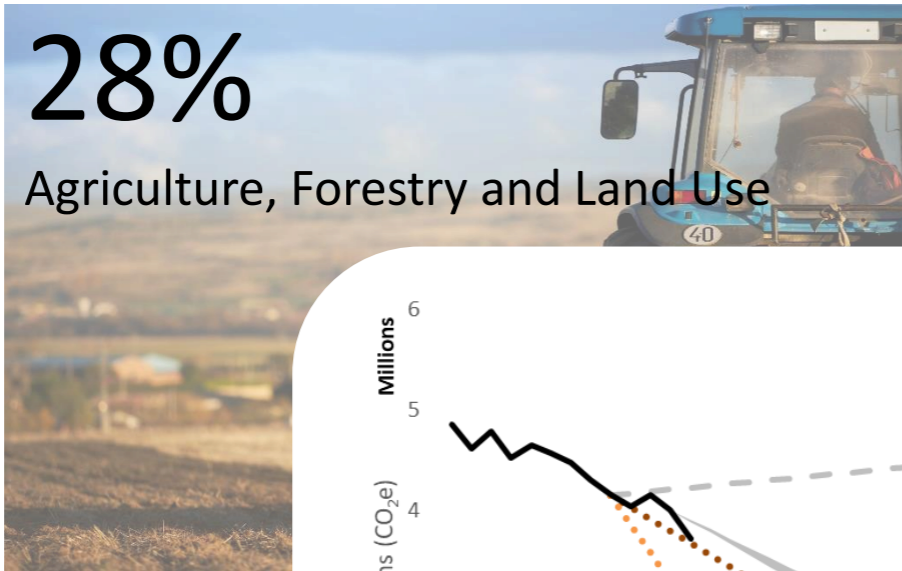


Decarbonise

Addressing scope 3 emissions in the council's wider sphere of influence



Rising to the challenge to become carbon neutral in Cornwall



Placing net zero at the heart of the council's strategic policy development



**CORNWALL &
ISLES OF SCILLY**
LOCAL AREA ENERGY PLAN



Unlocking net zero



A national approach that enables flexibility in delivery at the local level



Local Energy Systems and Governance



Strategic, needs-based, long-term funding allocations



NPPF reform



Incentivise behaviour change

