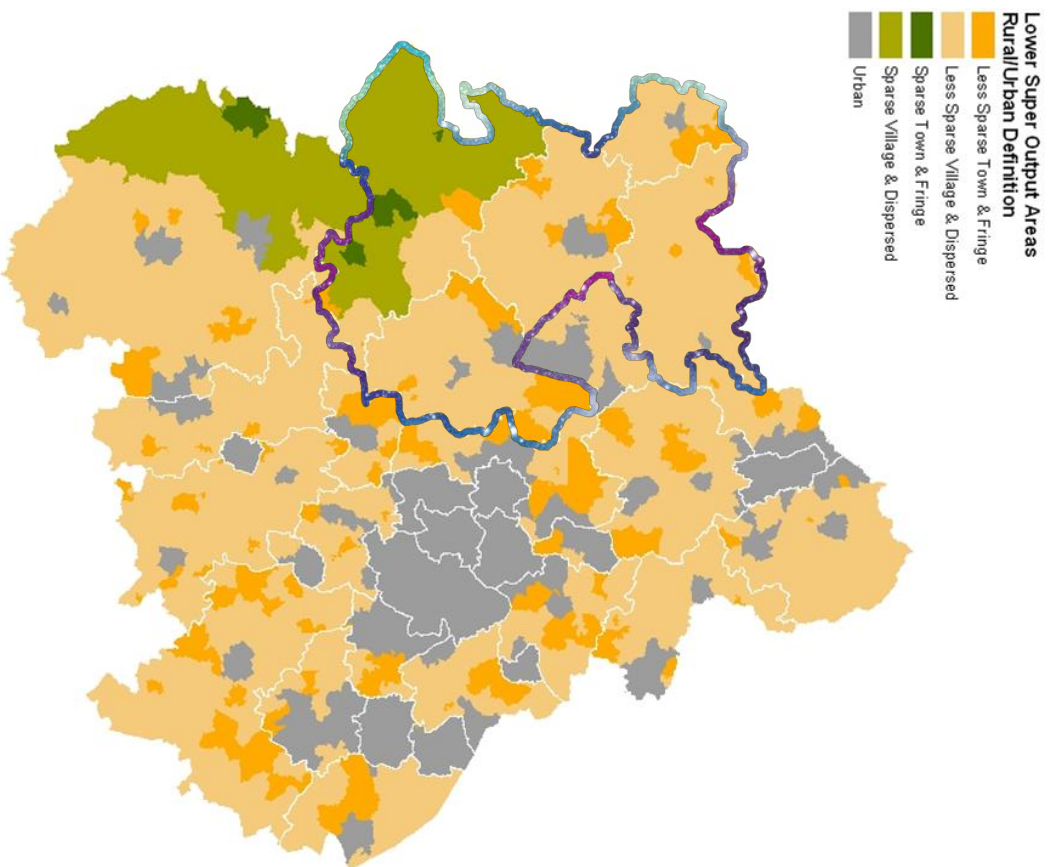


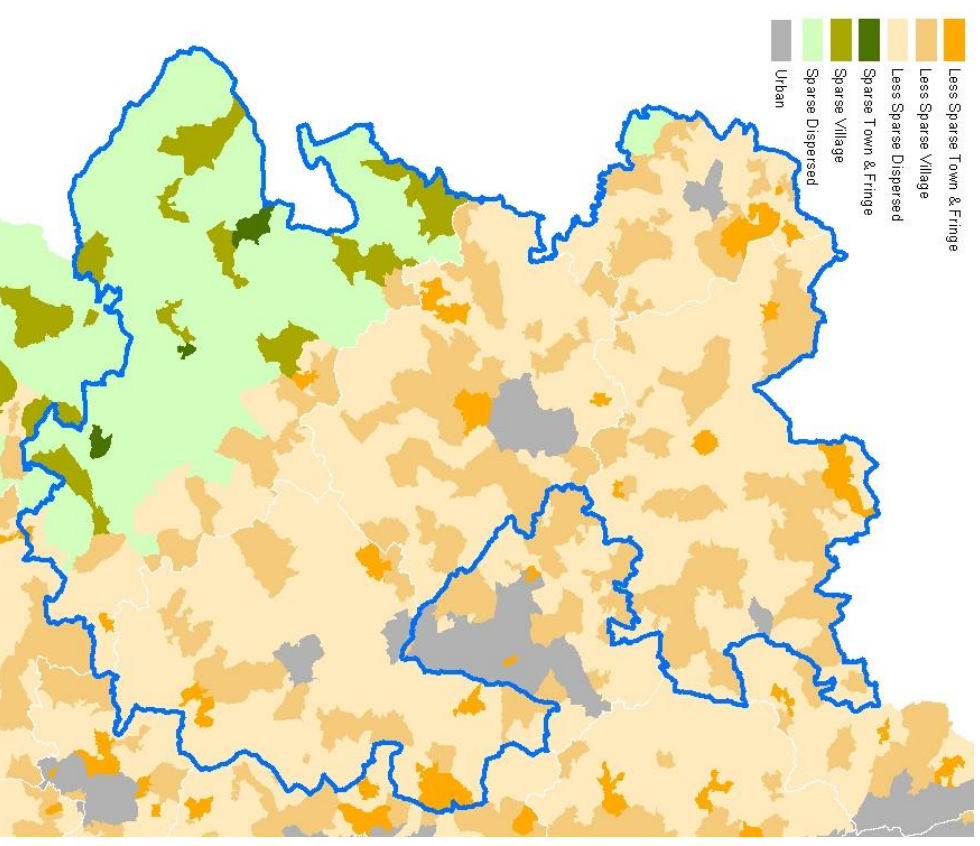


Future Shropshire

Mark Barrow
Executive Director: Place
Shropshire Council



34% of Shropshire's population lives in villages, hamlets and dwellings dispersed throughout the countryside



Of Shropshire's 193 Lower Level SOA's 65 are within the most 10% deprived nationally according to the geographical barriers to services sub-domain of the 2015 Indices of Multiple Deprivation

What is our narrative ?

Nottingham x 42

Profile	Shropshire	Nottingham
Population	320,000	329,000
Dwellings	141,074	137,012

Local Government Finance	Shropshire	Nottingham
Business Rates	£ 40.0m	£ 69.0m
Business Rates Top up	£ 9.9m	£ 28.1m
Revenue Support Grant	£ 6.1m	£ 25.3m
Total Settlement	£ 56.0m	£122.4m
Council Tax	£ 154.5m	£116.1m
Total	£ 210.5m	£238.5m
Core Spending Power per Dwelling	£ 1,657	£ 1,886
Core Spending Power 2019/20	£ 233.7m	£ 258.4m

What do we mean by
“Fair Funding?”

	Shropshire		Nottingham	
	Number	%	Number	%
Economically active	162,500	84.3	150,100	67.0
In employment	158,600	82.1	139,600	62.4
Employees	126,200	66.4	123,900	55.3
Self employed	32,100	15.7	15,300	6.8
Unemployed	4,600	2.8	11,200	7.4
Full-time Weekly Earnings	504.8	-	506.4	-
Jobs density	159,000	0.84	248,000	1.08

Net Out 3,500

Net In 98,000

	Nottingham (numbers)	Nottingham (%)	Shropshire (numbers)	Shropshire (%)
Enterprises				
Micro (0 to 9)	7,720	85.4	14,225	90.5
Small (10 to 49)	1,030	11.4	1,260	8.0
Medium (50 to 249)	210	2.3	190	1.2
Large (250+)	75	0.8	35	0.2
Total	9,035	-	15,710	-
Local Units				
Micro (0 to 9)	9,070	77.4	15,520	86.9
Small (10 to 49)	2,045	17.5	1,995	11.2
Medium (50 to 249)	510	4.4	310	1.7
Large (250+)	90	0.8	40	0.2
Total	11,715	-	17,865	-



A child born today will
graduate in 2040...

	Current Employment Numbers	Current Employment %	% Automation (Bank of Eng)	Numbers at risk of automation	Mean Probability of Automation (OECD) %	Aggregate # at risk of automation (OECD)
Soc 2010 Major Group 1-3	60,700	40.40	22.29	13,528	37.31	22,645
Managers, Directors And Senior Officials	18,200	12.10	17.00	3,094	30.00	6,067
Professional Occupations	22,200	14.70	13.00	2,886	37.00	8,214
Associate Professional & Technical	20,400	13.50	37.00	7,548	41.00	8,364
Soc 2010 Major Group 4-5	35,100	23.30	63.44	22,266	49.30	17,304
Administrative & Secretarial	12,300	8.20	42.00	5,166	48.00	5,904
Skilled Trades Occupations	22,800	15.10	75.00	17,100	50.00	11,400
Soc 2010 Major Group 6-7	24,600	16.40	74.20	18,252	46.62	11,469
Caring, Leisure And Other Service Occupations	14,700	9.80	75.00	11,025	43.00	6,321
Sales And Customer Service Occs	9,900	6.60	73.00	7,227	52.00	5,148
Soc 2010 Major Group 8-9	30,100	20.00	66.20	19,926	56.83	17,106
Elementary Occupations	10,200	6.80	75.00	7,650	59.00	6,018
Process Plant & Machine Operatives	19,800	13.20	62.00	12,276	56.00	11,088
TOTAL	150,500		49.15	73,972	45.53	68,524

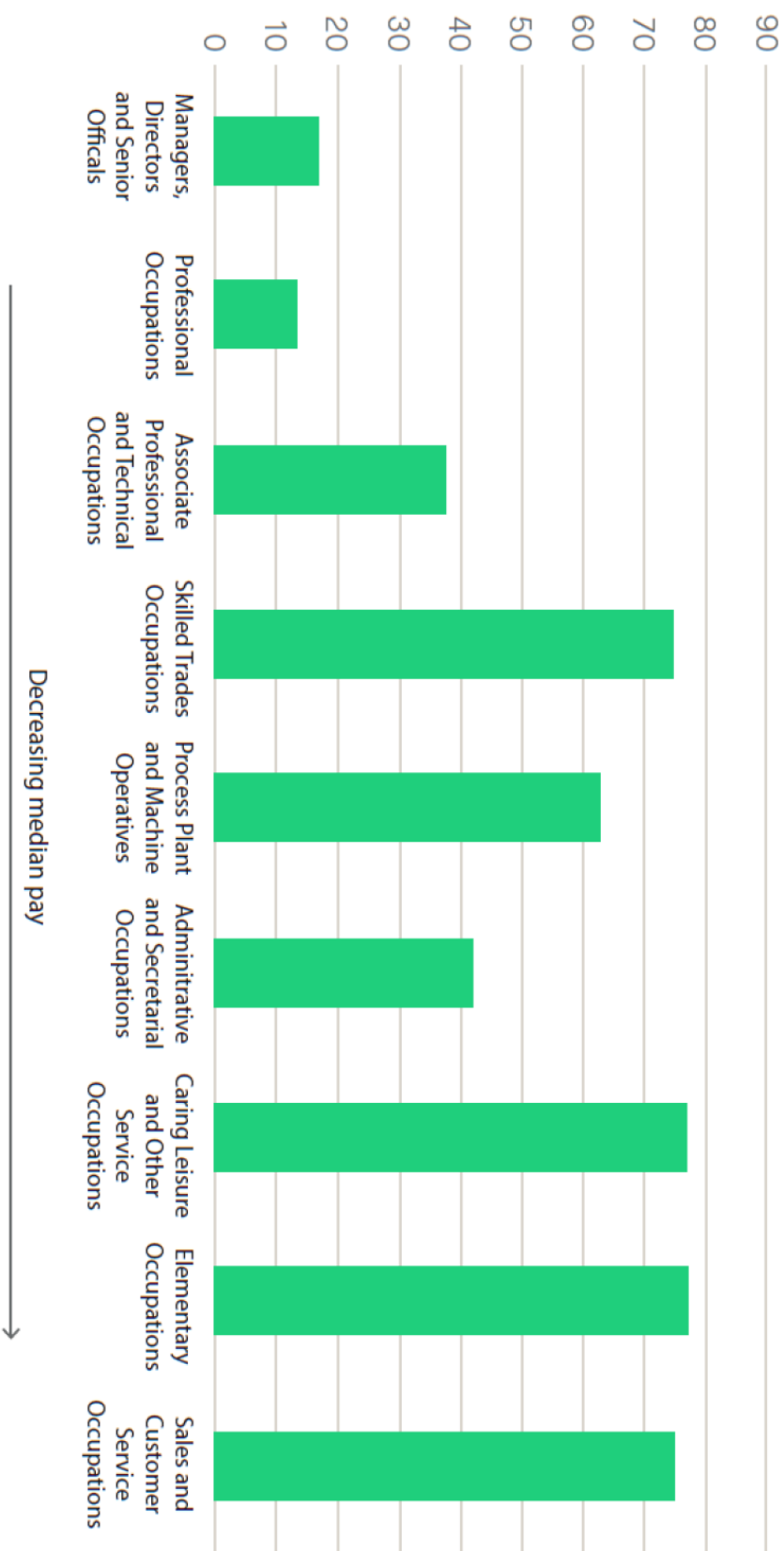
SHROPSHIRE
citizens in
employment
whose jobs are
at risk of
automation by
2040

**Ave 71,248
(47.34%)**

NOMIS 2018

The rise of technology – impact on employment 2040

Figure 8: Average probability of automation by occupation



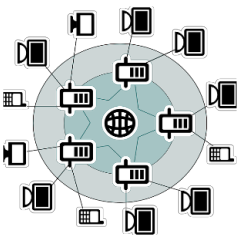
Source: Bank of England

The Nine Global Mega Trends

Economic Power Shift



Enabling Technology



Urbanisation



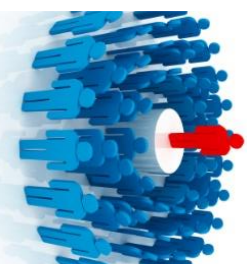
Public Debt



Economic interconnectedness



Rise of the individual



Demographics



Climate Change



Resource Stress



All parts of UK will grow but some will ‘age’ more than others

Growth pressures in education system, density of housing, mass transportation systems, family housing, social housing, need for employment

Growth pressures in social care, health, welfare support, specialist housing, leisure needs, surplus school places,

Shropshire average: 33% over 65 by 2030

Projected % population 65+, local authorities, 2008 to 2033

	2008	2033
<i>(Bottom 10)</i>		
Tower Hamlets	8.5	8.1
Islington	10.6	11.1
Wandsworth	11.0	11.3
Lambeth	9.7	11.5
Newham	9.7	11.9
Southwark	10.5	12.1
Camden	10.9	12.1
Hackney	10.1	12.3
Manchester	12.6	12.9
Barking & Dagenham	13.8	13.3



<i>(Top 10)</i>		
West Somerset	33.7	47.7
South Shropshire	29.3	45.5
Berwick-upon-Tweed	29.4	45.1
West Dorset	30.1	45.0
Rother	32.6	43.7
North Norfolk	32.2	43.6
Christchurch	33.8	41.7
East Dorset	31.2	41.7
East Lindsey	28.9	41.3
East Devon	31.3	40.9

Source: ONS, Subnational population projections (2008-based)

Housing Affordability

Location	Average House Price	Affordability Ratio
Bishops Castle	£279,925	11.21
Church Stretton	£299,899	9.52
Much Wenlock	£349,860	9.62
Oswestry	£143,896	5.45
Shifnal	£234,513	7.26
Shrewsbury	£195,111	6.52

ECONOMY	COMMUNITIES	PLACE
Digital Connectivity (90%)	"Place Plans" – 18 Countywide	Local Housing Company - Meeting local needs and making places..
Shrewsbury Big Town Plan	'Whole Place' conversations	Reshaped Housing ALMO
Enterprise/Innovation Hubs	Libraries as Resource Centres	Local Plan Review – Planning for Growth
Access to Finance	T&PC's as key partners	Celebrating and promoting the Shropshire Hills AONB & valuing the visitor economy
Skills & Industry 4.0	Supporting 'Trustees' & VCSO's	Reviewing CL... understanding the 'impact' of development
Agriculture & Food Production	System Leadership – i.e. health & care,	Heritage Preservation Trust – bringing assets to life
Rail Investment – Local & Regional	The Future Council – Hubs, Agile, Commercial	Celebrating who we are !
Public Transport	Bidding support	
'Local' Economic Growth Strategies		

An evolving dashboard !

Questions & Discussion

Mark Barrow

Executive Director: Place

mark.barrow@shropshire.gov.uk

07887 805276

www.shropshire.gov.uk