



HM Government

LEVELLING — UP —

Levelling Up the United Kingdom





- **What does levelling up mean?**
- **Diagnosing the problem**
- **Reforming the system**
 - The 12 missions
- **Designing the policy**



What does levelling up mean?

“This is not about slowing down London or the south-east, or damping down animal spirits, but rather about turbocharging the potential of every part of the UK.

This country will not achieve its full potential until every individual and community achieves everything of which they are capable.

Our economy has been like a jet propelled by only one engine. Now, we need to fire up every resource that we have.”

**Secretary of State for Levelling Up, Housing and Communities
2 February 2022**

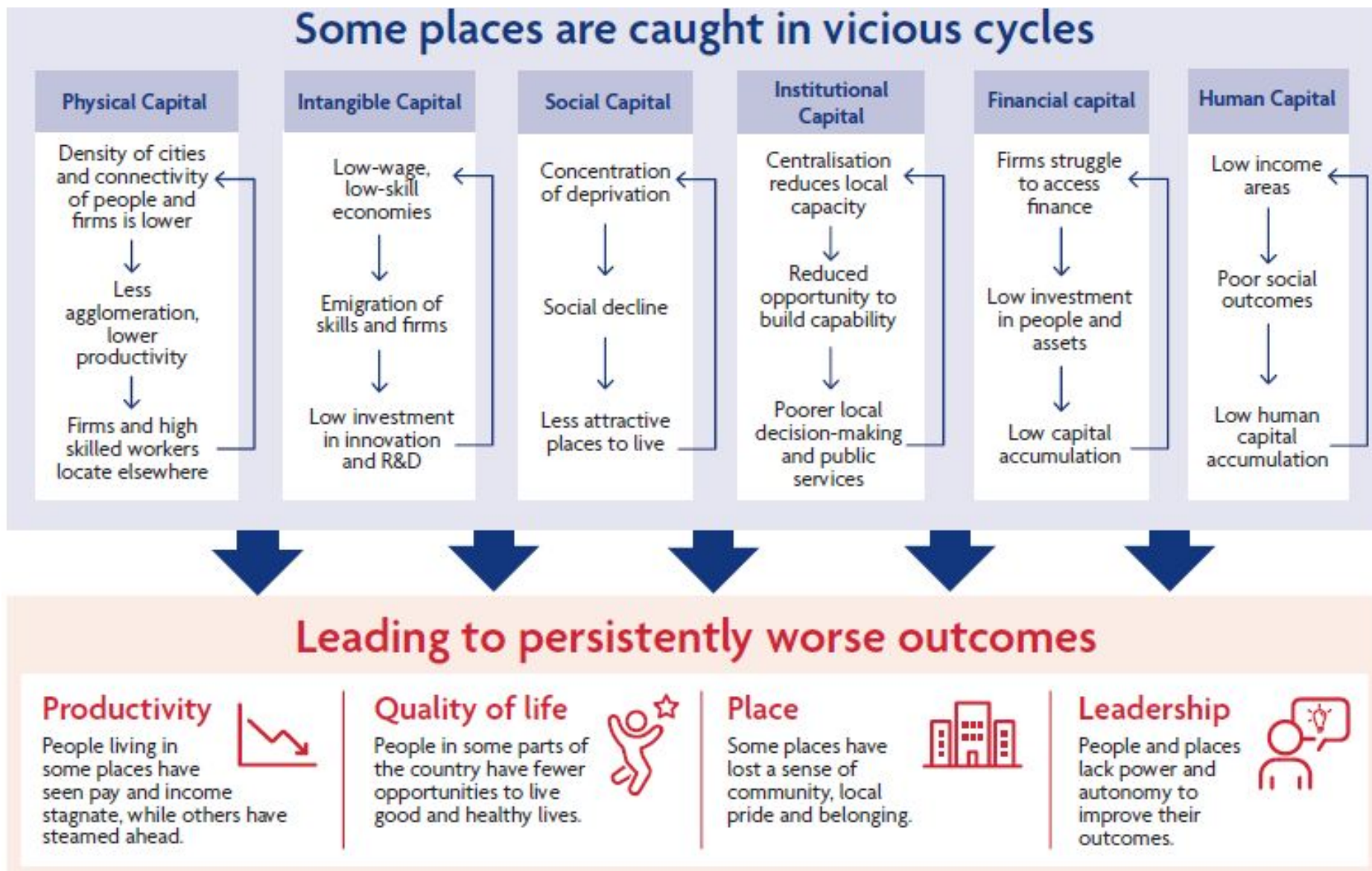


What does levelling up mean?

- **Boosting productivity, pay, jobs and living standards by growing the private sector, especially in those places where they are lagging.**
- **Spreading opportunities and improving public services, especially in those places where they are weakest.**
- **Restoring a sense of community, local pride and belonging, especially in those places where they have been lost.**
- **Empowering local leaders and communities, especially in those places lacking local agency**



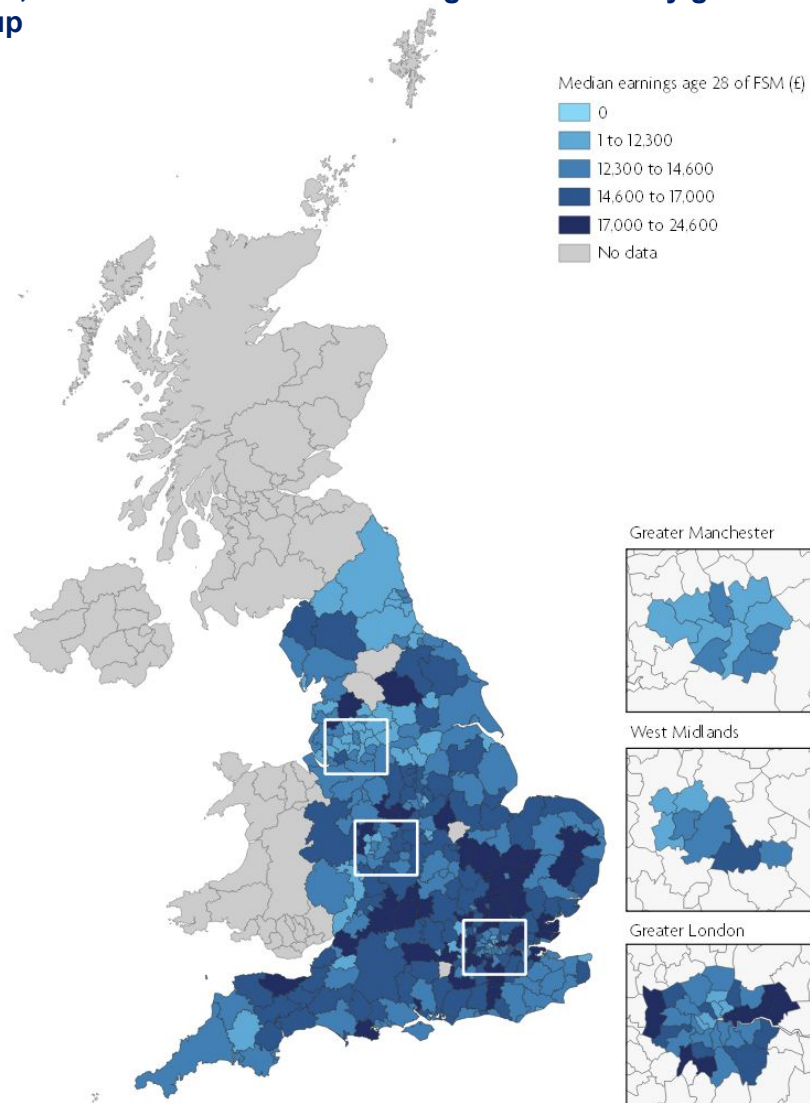
Diagnosing the problem





Diagnosing the problem

Median earnings at 28 for boys who were on FSM at age 16, across local authorities in England where they grew up



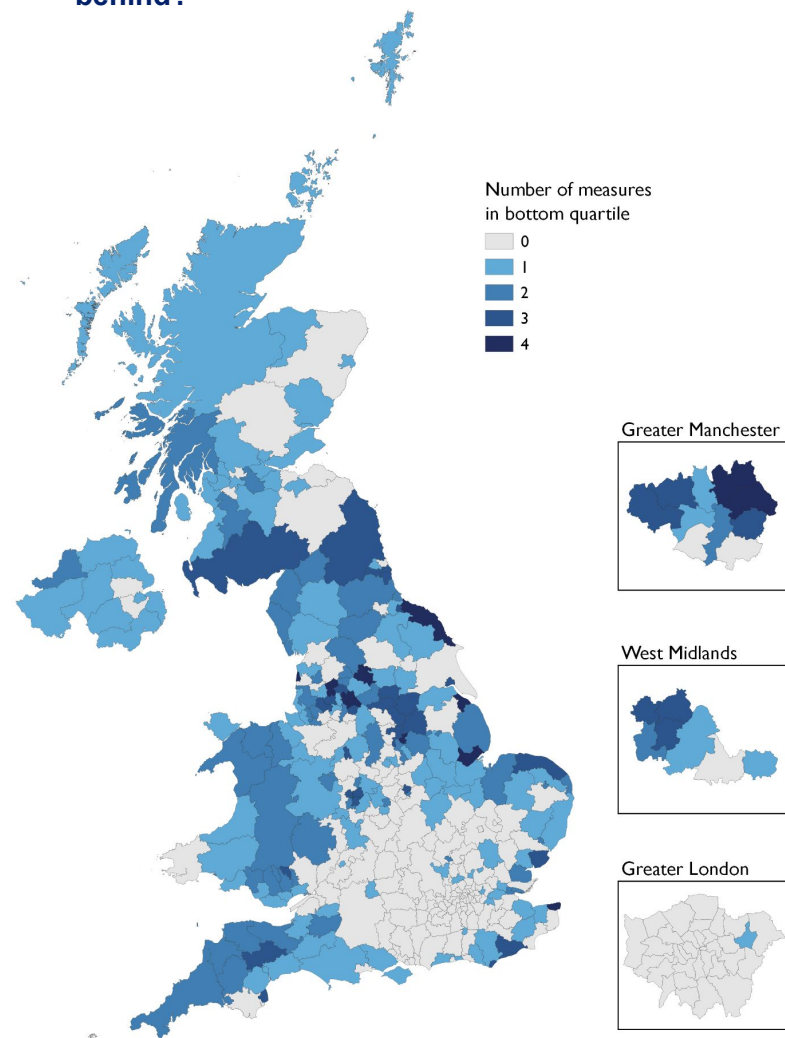
Where people grow up has lasting impacts on their life chances:

- Children from disadvantaged backgrounds have poorer future job and income prospects - but the chances of these children progressing is also affected by where they live.
- A child eligible for free school meals (a measure of deprivation) in London has more than double the chance of going to university by age 19 than a child on free school meals outside London.
- For the most disadvantaged people living in the most disadvantaged places, the effects combine.



Diagnosing the problem

Spatial patterns: Which places are most left behind?



Source: Cities and Local Growth Unit
Contains Ordnance Survey Data © Crown copyright and database rights 2021
Produced by Local Growth Analysis, Cities and Local Growth Unit, Open Government License v3.0

- **Some places perform poorly on several of these measures:**
 - Coastal communities previously associated with tourism;
 - Parts of the North and Midlands with industrial legacies;
 - Rural parts of Scotland, Wales and Northern Ireland.
- Cities tend to perform better overall, but often include both some of the best and the worst-performing areas.

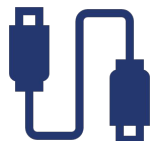


Reforming the system

Clear, medium-term, cross-Government missions

Living Standards	R&D	Transport	Digital Connectivity
Education	Skills	Health	Well-being
Pride in Place	Housing	Crime	Local Leadership

Systems change – rewiring how decisions are made



Reshaping central decision-making
e.g. Places for Growth, Levelling Up Directors, funding simplification



Empowering local decision-making
e.g. devolution framework, supporting private sector partnerships



Data, monitoring and evaluation
e.g. Subnational Data Strategy, ONS Explorer



Transparency and accountability
e.g. statutory annual reporting, independent Advisory Council

Levelling Up Missions	
Focus Area	Mission
<i>Boost productivity, pay, jobs and living standards by growing the private sector, especially in those places where they are lagging</i>	
Living Standards	By 2030, pay, employment and productivity will have risen in every area of the UK, with each containing a globally competitive city, and the gap between the top performing and other areas closing.
Research & Development (R&D)	By 2030, domestic public investment in R&D outside the Greater South East will increase by at least 40%, and over the Spending Review period by at least one third. This additional government funding will seek to leverage at least twice as much private sector investment over the long term to stimulate innovation and productivity growth.
Transport Infrastructure	By 2030, local public transport connectivity across the country will be significantly closer to the standards of London, with improved services, simpler fares and integrated ticketing.
Digital Connectivity	By 2030, the UK will have nationwide gigabit-capable broadband and 4G coverage, with 5G coverage for the majority of the population.

Levelling Up Missions	
Focus Area	Mission
<i>Spread opportunities and improve public services, especially in those places where they are weakest</i>	
Education	By 2030, the number of primary school children achieving the expected standard in reading, writing and maths will have significantly increased. In England, this will mean 90% of children will achieve the expected standard, and the percentage of children meeting the expected standard in the worst performing areas will have increased by over a third.
Skills	By 2030, the number of people successfully completing high-quality skills training will have significantly increased in every area of the UK. In England, this will lead to 200,000 more people successfully completing high-quality skills training annually, driven by 80,000 more people completing courses in the lowest skilled areas.
Health	By 2030, the gap in Healthy Life Expectancy (HLE) between local areas where it is highest and lowest will have narrowed, and by 2035 HLE will rise by five years.
Well-being	By 2030, well-being will have improved in every area of the UK, with the gap between top performing and other areas closing.

Levelling Up Missions	
Focus Area	Mission
<i>Restore a sense of community, local pride and belonging, especially in those places where they have been lost</i>	
Pride in Place	By 2030, pride in place, such as people's satisfaction with their town centre and engagement in local culture and community, will have risen in every area of the UK, with the gap between top performing and other areas closing.
Housing	By 2030, renters will have a secure path to ownership with the number of first-time buyers increasing in all areas; and the government's ambition is for the number of non-decent rented homes to have fallen by 50%, with the biggest improvements in the lowest performing areas.
Crime	By 2030, homicide, serious violence and neighbourhood crime will have fallen, focused on the worst affected areas.

<i>Empower local leaders and communities, especially in those places lacking local agency</i>	
Focus Area	Mission
Local Leadership	By 2030, every part of England that wants one will have a devolution deal with powers at or approaching the highest level of devolution and a simplified, long-term funding settlement.



Designing the policy

R&D investment outside Greater South East	Innovation Accelerators in West Midlands, Greater Manchester, Glasgow	Local Government Pension Scheme investment	Bus improvements
Education Investment Areas	UK National Academy	Local Skills Improvement Plans	Unit for Future Skills
Employment and Skills Pathfinders	School cooking revolution	Community Eatwell Programme	Health Disparities White Paper
Moving 22,000 Civil Servants out of London	20 regeneration towns and cities	End bias to London and South East in housing funding	£1.5bn Levelling Up Home Building Fund
Levy on empty homes	Reforming the private rented sector	£560m National Youth Guarantee and expansion of cadets	Strategy for Community Spaces and Relationships
Dormant Assets Scheme	High Streets Task Force	£39m in parks funding	£230m for grassroots football
Cultural spending outside London	£150m Safer Streets Fund	Unpaid work for 16-17 year olds involved in crime	New devolution to counties and more mayors
More mayors	UK Shared Prosperity Fund	Islands Forum	Local growth funding simplification

Thank you



HM Government

LEVELLING UP

Levelling Up the United Kingdom

