



# Northern Devon

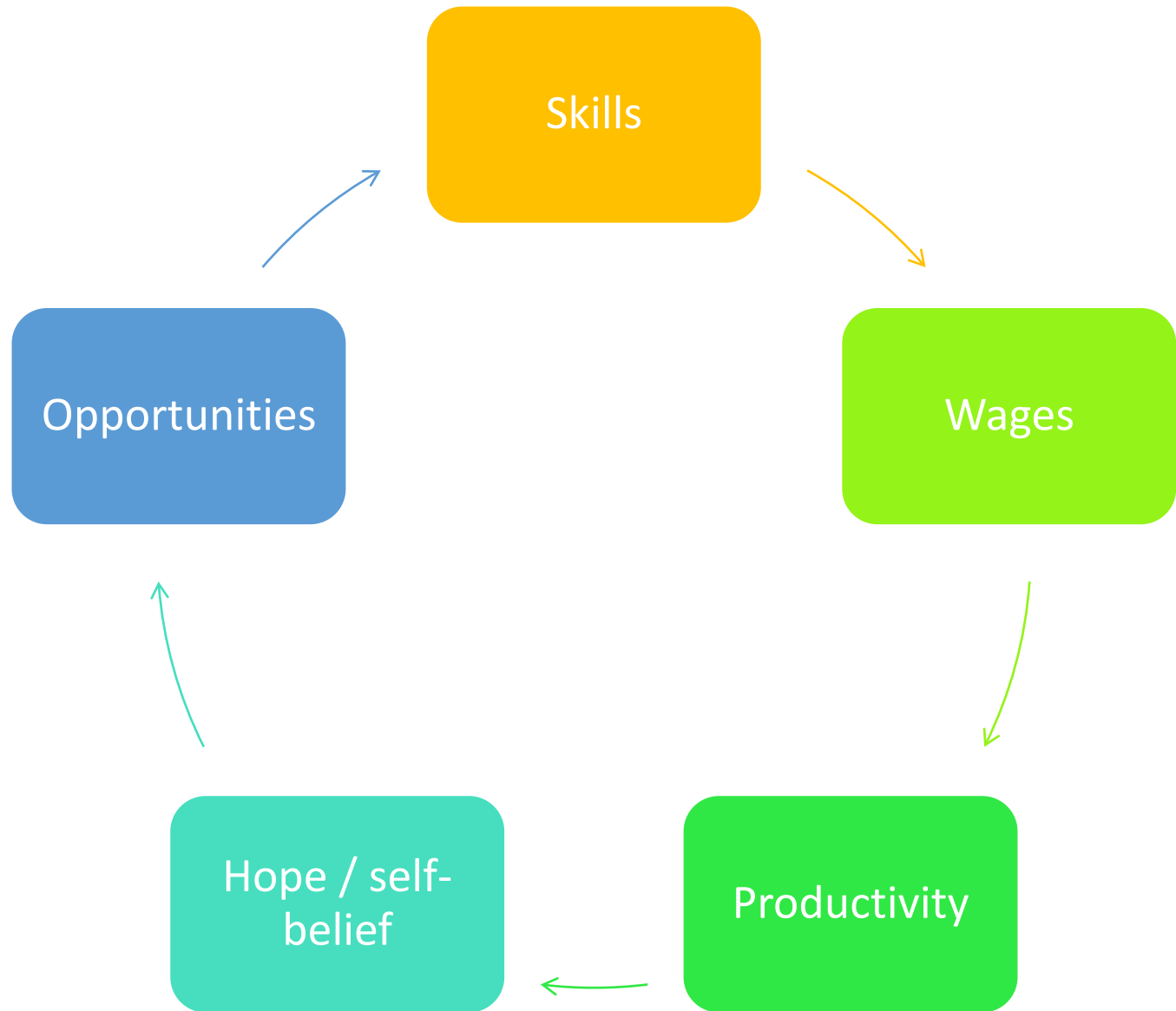
## A road to recovery

May 2021

- Torrington is Levelling Up Fund priority 1 place and a Priority Place for Community Renewal Fund- one of only 84 highest priority in UK
- Torrington has the 3rd lowest full time workplace earnings in England (ASHE, 2020) and the 2nd worst adult social mobility (ONS, 2016)
- ONS data (2019) shows Torrington's productivity is about half of the UK average, with GVA per head lower than Cornwall, Torbay and Barnsley
- Low skills profile and 40% of working residents commute outside of the district
- A pre-pandemic average house price to salary ratio close to 10.3:1 (7.8 across England and Wales, ONS, 2019) - a gap which has widened during the pandemic.)
- Bideford town centre was highlighted in top 5% nationally most vulnerable to pandemic impact and is the most vulnerable in Bideford (Devon County Council)

## Long term partnership

- Strategic shared vision
- Clear routes to delivery
- Genuine best fit based on local knowledge
- Input of wider expertise
- Community confidence in outcomes



# Our vision is for “a growing, productive, clean and inclusive economy which supports well-being and happiness across our communities.”

We will work towards this through activity across four key areas to create the essential conditions for a productive and sustainable economy:

- Economy & Innovation
- Skills & Aspirations
- Business Environment
- Connected Communities

And across two cross cutting themes to ensure that all activity contributes to:

- Clean growth, and
- Inclusive growth

# Our vision is for “a growing, productive, clean and inclusive economy which supports well-being and happiness across our communities.”

We will work towards this through activity across four key areas to create the essential conditions for a productive and sustainable economy:

- Economy & Innovation
- Skills & Aspirations
- Business Environment
- Connected Communities

Emphasis on:

- Natural Capital
- Net Zero
- Skill-driven
- Of the place

And across two cross cutting themes to ensure that all activity contributes to:

- Clean growth, and
- Inclusive growth

# Our vision is for "a growing, productive, clean and inclusive economy which supports well-being and happiness across our communities."

We will work towards this through activity across four key areas to create the essential conditions for a productive and sustainable economy:

- Economy & Innovation
- Skills & Aspirations
- Business Environment
- Connected Communities

Emphasis on:

- Natural Capital
- Net Zero
- Skill-driven
- Of the place

Work anywhere  
generation?

And across two cross cutting themes to ensure that all activity contributes to:

- Clean growth, and
- Inclusive growth

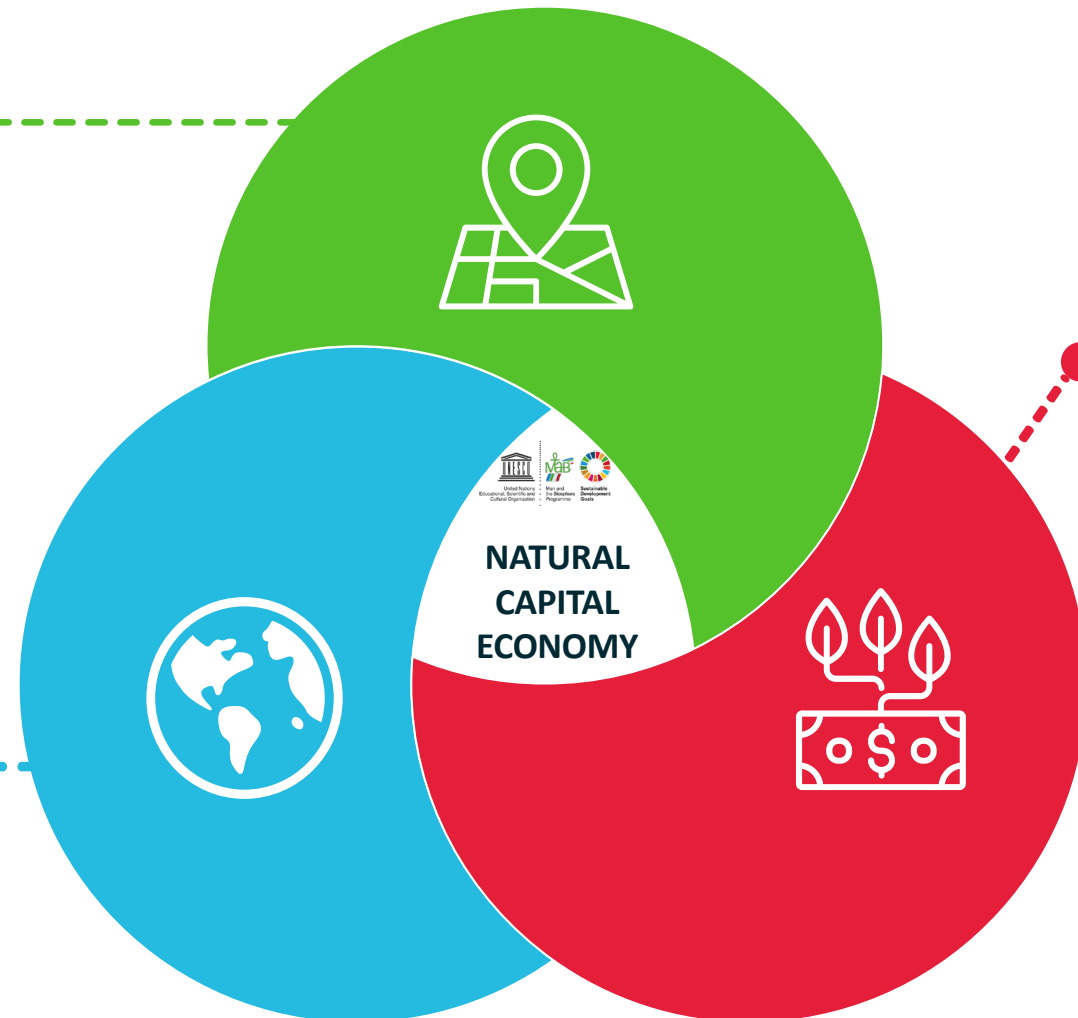
# Natural capital economic model

## 1. NATURE RESTORATION

- Peatland restoration
- Catchment improvement
- Biodiversity & rewilding
- Woodland planting
- Agroforestry
- Regenerative agriculture
- “Water” farming
- “Soil” farming
- Marine habitat & stocks
- Sustainable aquaculture

## 2. CLIMATE CHALLENGE

- Peatland carbon
- Woodland carbon
- Soil carbon
- Blue carbon
- Flood resilience
- Monitoring & evaluation



## 3. LOCAL JOBS & ECONOMIC DEVELOPMENT

- High quality, high paid jobs
- Year-round productivity
- Entry level with skills escalators
- Community resilience & prosperity
- Reverse “brain drain”
- Raise social mobility
- Tech & AI
- Competitive advantage over urban centres
- Integrated with wellbeing & health

# The Biosphere Foundation's strategy

**1.**

**FUND**



**Natural Capital  
Impact Fund**

**2.**

**PLACE**



**Natural Capital  
Marketplace**

**3.**

**MEASURE**

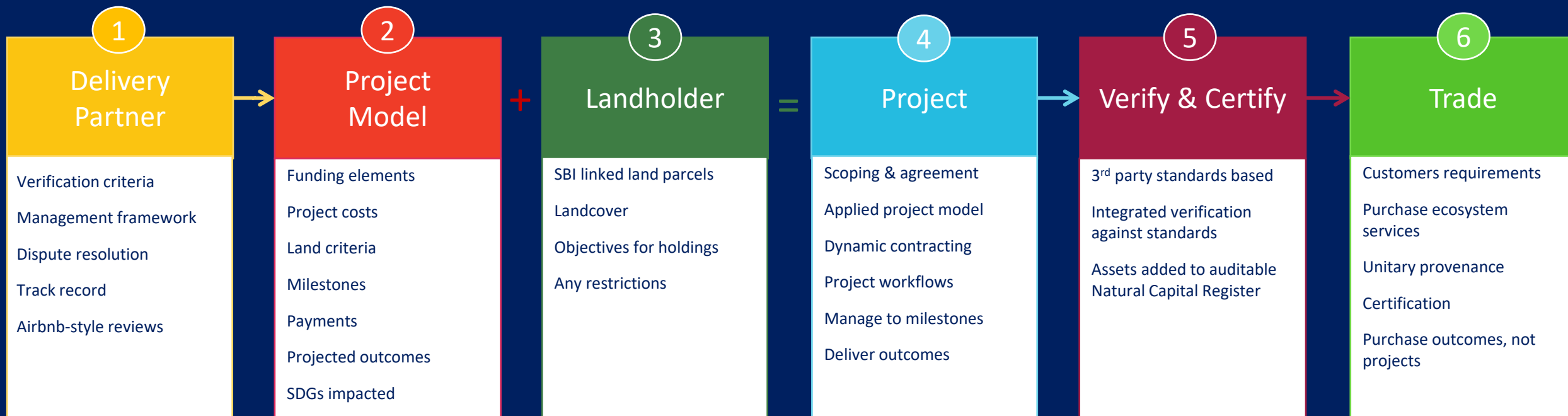


**Smart  
Biosphere**

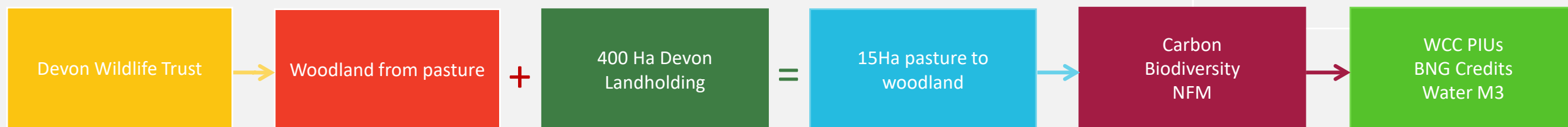
*Good intentions + strong economics = transformative impact*



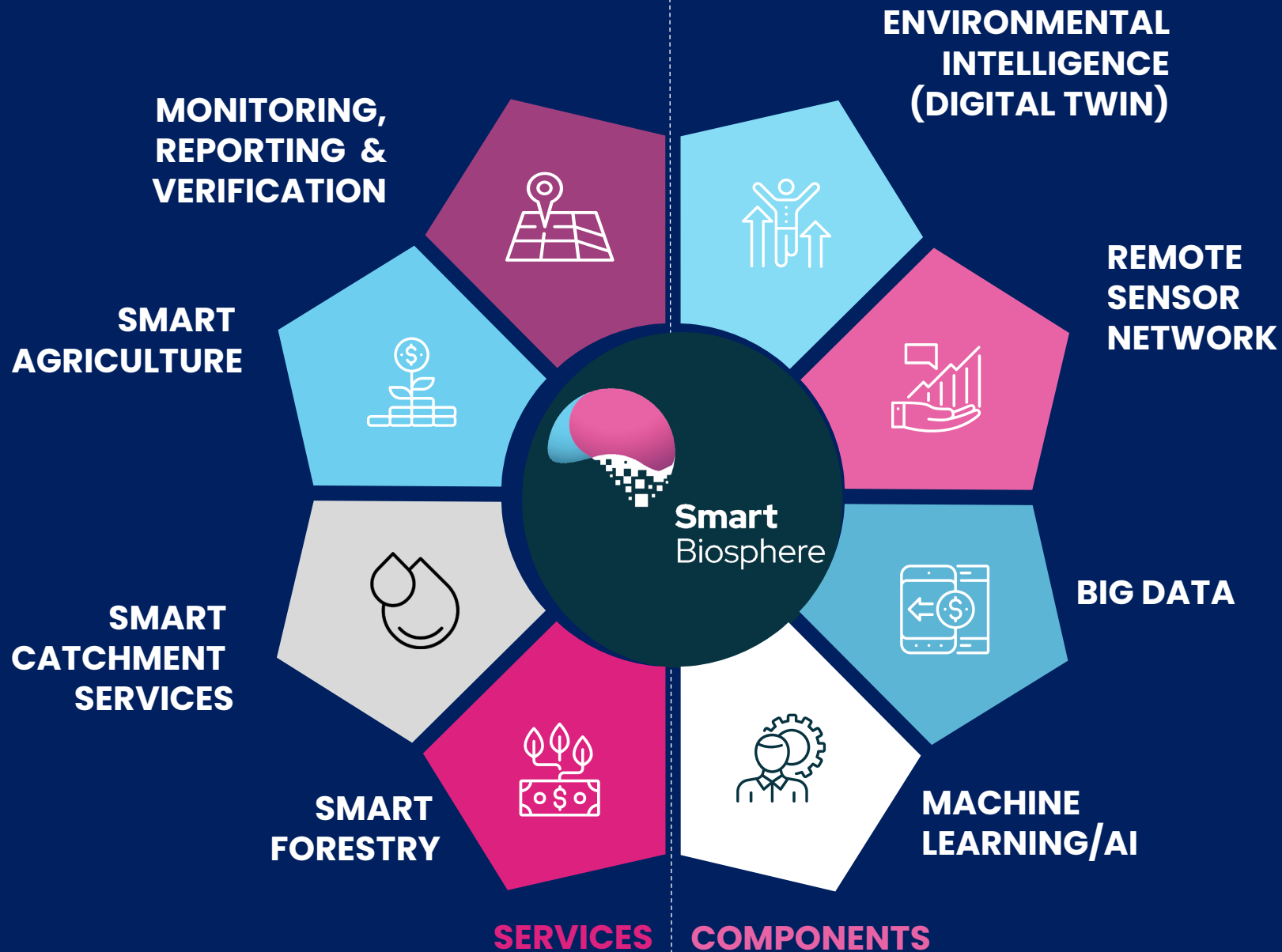
# PLACE: How it works



## Example



# MEASURE: Smart Biosphere





## Being northern Devon

- Green innovation
- Marine pride
- Town centres which serve and excite
- Doing things differently
- Clotted cream ice cream

