



EAST RIDING
OF YORKSHIRE COUNCIL

Life on the Edge: Managing a Changing Coast 24th May 2017



Jeremy Pickles
Principal Sustainable Communities and Coast Officer



Economic Development

Sustainable Development

Environment
and Climate

Environmental
management (EMAS)

Climate change

Fairtrade

Biodiversity

Specialist technical
advice

Biodiversity
Partnership

Local Wildlife Sites
Panel

Coast

Coastal policy

Marine & coastal
environmental
management

Community
engagement,
adaptation & education

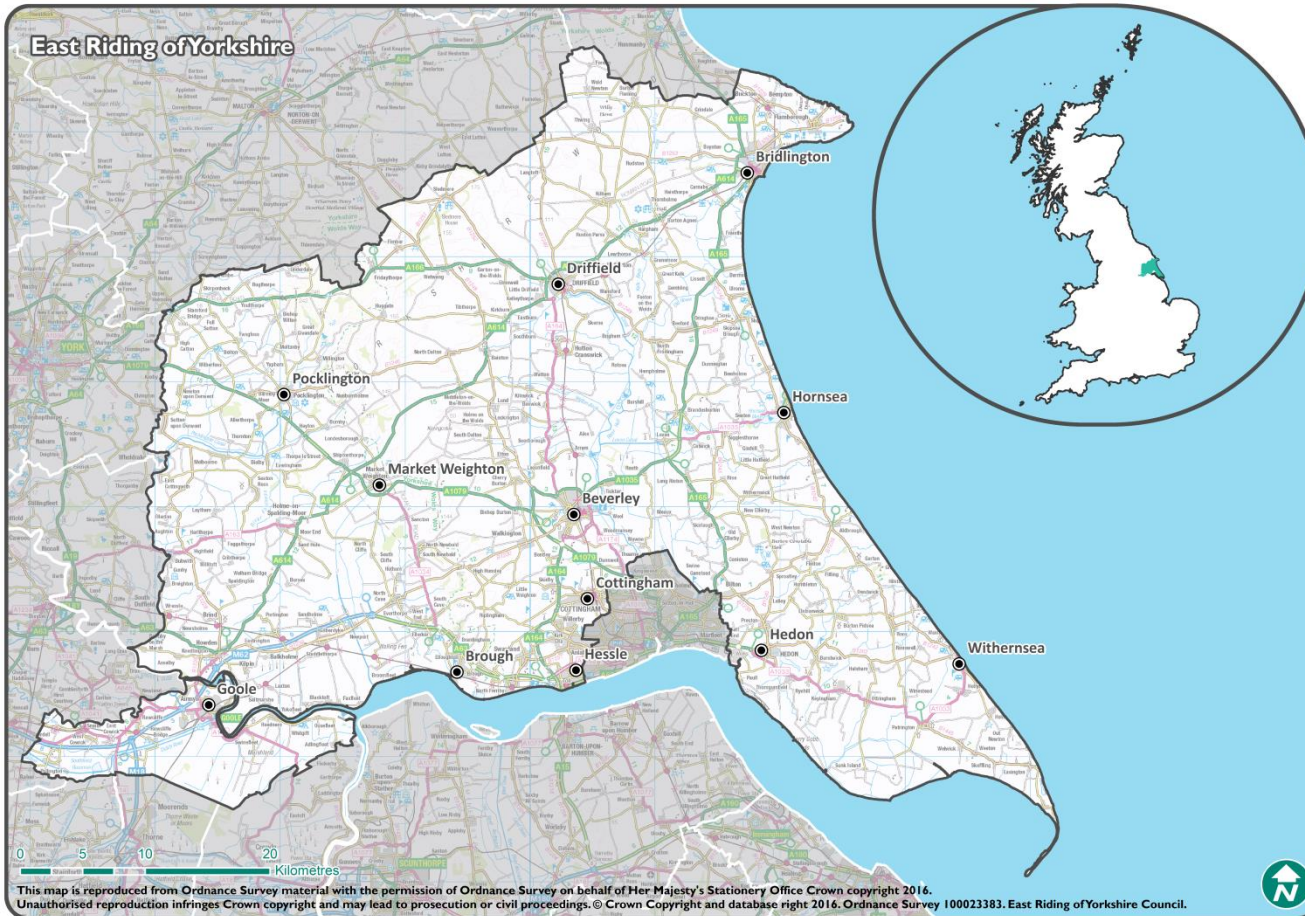
Waterways

Strategic framework for
developing waterways

Waterways Partnership

Capacity building and
community
engagement

East Riding – Facts and Figures



- Population of approx. 336,685 (2015 ONS)
- Area of 957 square miles (2,479 km²)
- 53 miles (85km) of coastline from chalk cliffs at Bempton to dunes at Spurn Point
- 25% of the population are of pensionable age, 7% higher than the national average

East Riding - Coastline



Chalk cliffs at Flamborough: 17 kilometres (11 miles)



Eroding cliff line: 48 kilometres (29 miles)

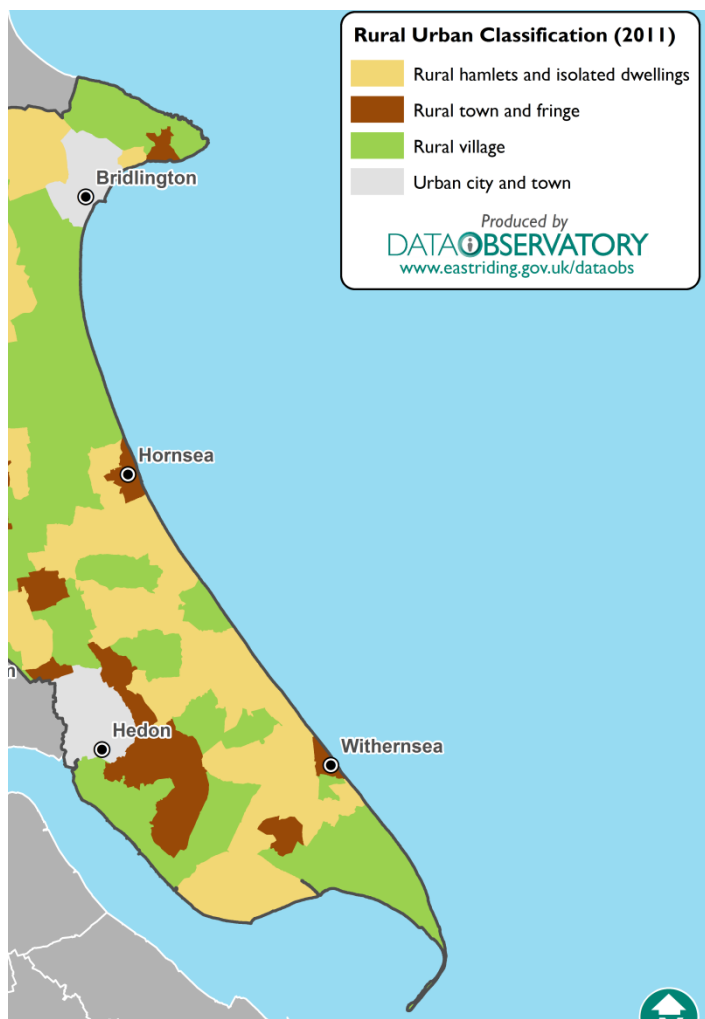


Dunes at Spurn: 8 kilometres (4 miles)



Defended frontages: 12 kilometres (8 miles)

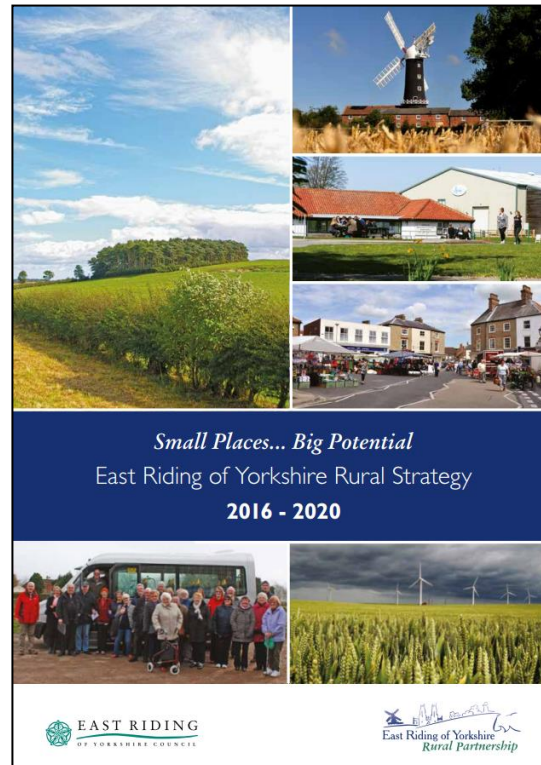
East Riding Coast – Rural Population



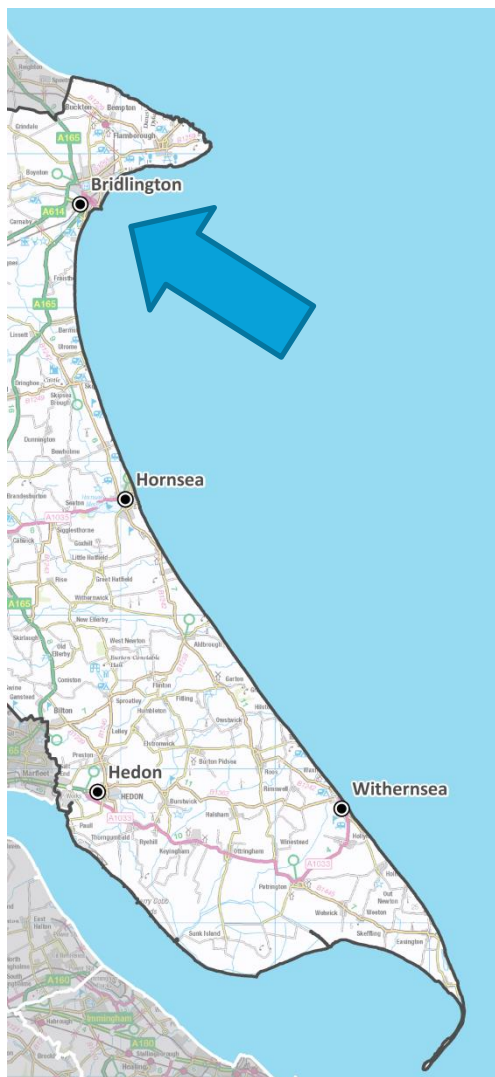
- In the East Riding, 93% of the land is classified as rural compared to 85% in Yorkshire and the Humber
- Rural coast population (excluding towns of Bridlington, Hornsea and Withernsea) is approximately **10,000** (ONS 2015)
- Much older population than the national average
- 15 rural coastal parishes from Bempton in the north to Easington in the south

East Riding – ‘Small Places...Big Potential’

The overarching vision in the East Riding Rural strategy: “People of all ages can live, work and thrive in the *Rural East Riding*, which in itself is vibrant and sustainable”.



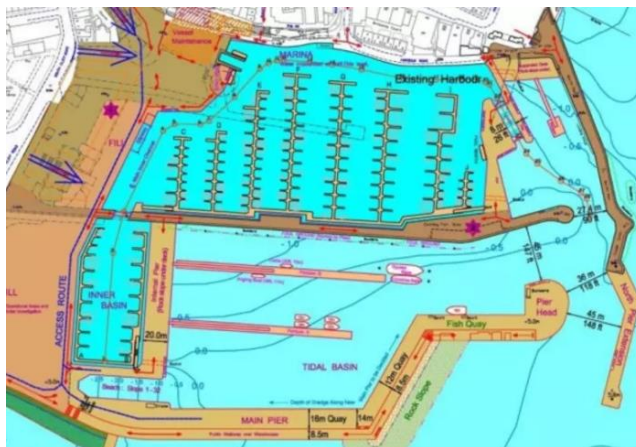
East Riding Coast – Major Settlements



Bridlington

Population: 35,500 (ONS 2015)

Economy: Retail (18.2%), Accommodation and Food (13.1%),
Construction (11.9%)



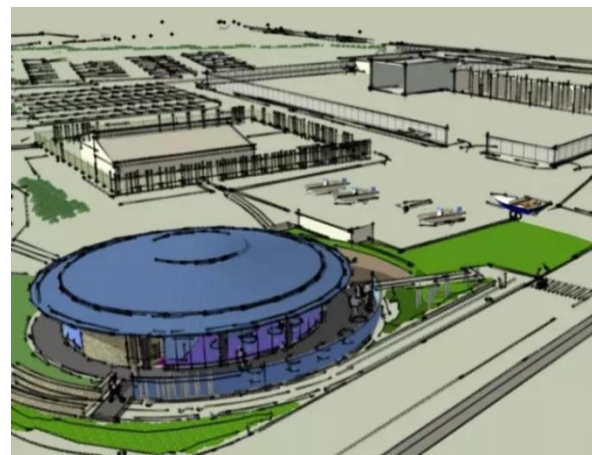
East Riding Coast – Major Settlements



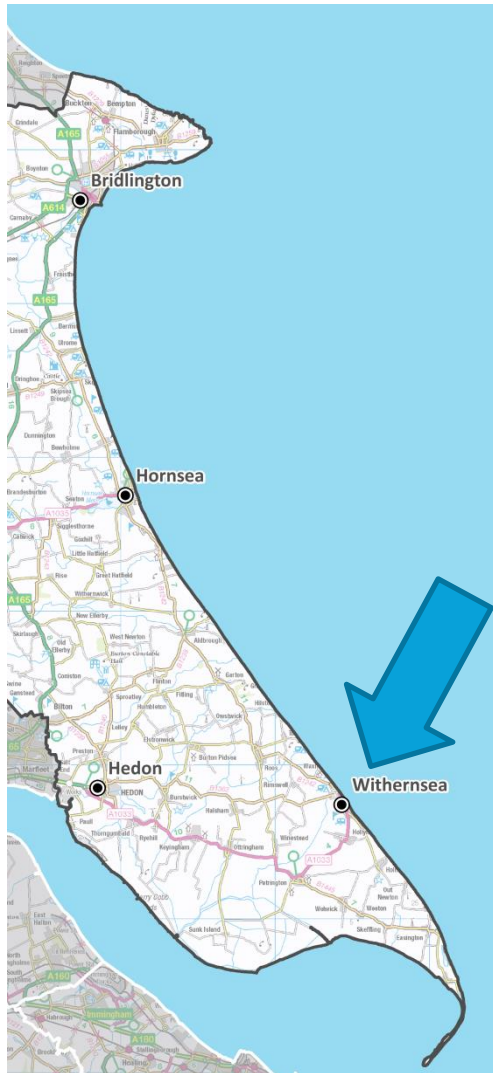
Hornsea

Population: 8,500 (ONS 2015)

Economy: Retail (16.3%), Health and Social Care (14.8%),
Education (11.7%)



East Riding Coast – Major Settlements



Withernsea

Population: 6,400 (ONS 2015)

Economy: Retail (16.1%), Health and Social Care (16.0%),
Construction (11.1%)



East Riding Coast - Coastal Change

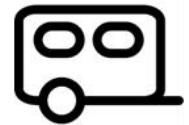


East Riding Coast - Coastal Change



28 by 2025
49 by 2055

People, built environment and natural environment at risk from **1.5-2.5 m/yr** average erosion rate and isolated individual cliff losses of **20m+**



427 by 2025
859 by 2055

East Riding Coast - Coastal Change

‘Littler Britain: Stunned homeowners lose a metre off their gardens in a single day after tidal surge’ – *The Sun, January 2017*

‘My house could fall into the sea at any moment’ – *Hull Daily Mail, March 2015*

‘The sinking isle: the homeowners battling coastal erosion’ – *The Guardian April 2015*

‘Hundreds of homes set to disappear into the North Sea over the next century as rampant coastal erosion devours roads and villages’ – *Daily Mail, February 2015*



East Riding Coast – Impacts

January 2011



September 2011



March 2017



July 2012



East Riding Coast - Adaptation Support

In the absence of a national coastal change policy, the Council takes a **local, risk-based approach** to managing risks. Delivery mechanisms include:

- **£1.2m East Riding Coastal Change Pathfinder (2010-2012)**
43 demolitions and 16 relocations
- **East Riding Coastal Change Fund (2012-)**
4 relocations and 6 demolitions
- **Coastal change drop-in sessions**
184 households, businesses and community groups engaged since 2010
- **Coastal Officers' Working Group**



Changing Horizons



Received £25,000 in 2013 to deliver 'Changing Horizons', a project focused on capturing and recording the coastal change and fishing heritage for the benefit of affected communities and future generations.

Further details and videos can be accessed at:

www.eastriding.gov.uk

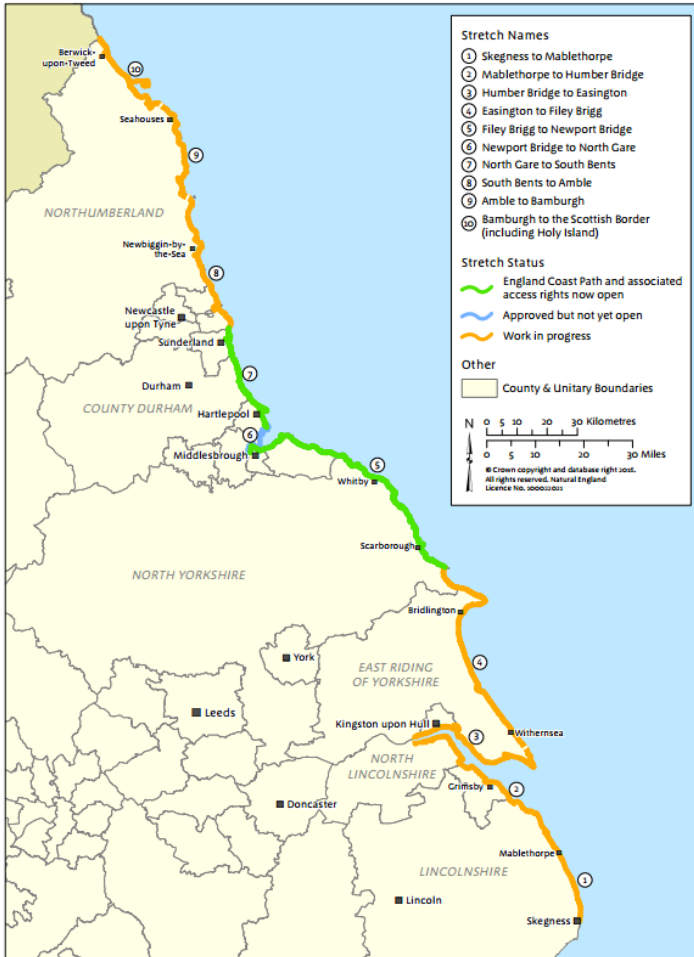
Coastal Change – What's next?



- Continue to work closely with residents at risk from coastal change
- Continue to lobby Defra for a national coastal change policy and adaptation funding source
- Create a Coastal Change Management Framework to streamline responses to coastal change

England Coast Path

NATURAL ENGLAND
Coastal Access Completion by 2020 - Provisional Timings and Stretches
North East Hub Team - 25th November 2016



The 59 mile (95km) Easington to Filey Brigg stretch of the England Coast Path is due to open in 2018.

Unique challenges faced so far have included:

- Eroding cliff line
- MOD bombing range
- Limited landowner buy-in
- Limited existing Public Rights of Way and beach access points

Coastal Opportunities Gateway

Coastal Opportunities Gateway (COG)

Received £476,147 in 2015 in order to prepare rural coastal communities for the opening of the England Coast Path.

The aims of the project were to:

- Support local coastal businesses.
- Provide free workshops for businesses.
- Improve village infrastructure and promote village tourism through community 'Task and Finish' groups.
- Enhance flood defences on the Humber Estuary at Kilnsea.



Coastal Opportunities Gateway



Thank you for listening

